

## Table of Contents

<b>1. Introduction</b> .....	1
<b>2. Hardware Requirements</b> .....	1
<b>3. Installing Profile</b> .....	1
<b>4. Quick Start Using Profile</b> .....	5
Importing .....	5
Opening a saved run .....	5
Saving a run to disk.....	6
<b>5. Importing Data</b> .....	6
<b>6. Exporting Data</b> .....	8
<b>7. VC3000 Setup</b> .....	9
<b>8. Header Information</b> .....	15
<b>9. Viewing Data</b> .....	18
Printing the data .....	18
<b>10. VC3000 Settings</b> .....	19
<b>11. Sensor Setup</b> .....	21
<b>12. OBDII sensor setup</b> .....	22
<b>13. Runway Friction Meter Steps</b> .....	23
<b>14. View Each Runs Information</b> .....	23
<b>15. Runway Friction Meter Report</b> .....	24
<b>16. Brake Test Calculations</b> .....	25
<b>17. Quick Stats for acceleration runs</b> .....	26
<b>18. Quick Stats for braking runs</b> .....	28
<b>19. Calculate Averages for a run</b> .....	28
<b>20. Formulas Window</b> .....	29
<b>21. Display Average of many Runs</b> .....	30
<b>22. Graphing</b> .....	32
Starting a Graph .....	32
Adding a run to a graph.....	34
Changing graph setup .....	34
Changing the Graph Range .....	35
Saving a graph as a Metafile.....	35
Copying a graph to the clipboard.....	36
Printing a graph .....	36
<b>23. Real Time Playback with Meters</b> .....	37
<b>24. Calculate Rolling Friction</b> .....	38
<b>25. Calculate Flatplate Area</b> .....	39
<b>26. Changing Program Options</b> .....	41
Header Defaults .....	42
Sensor defaults .....	43
OBDII Defaults .....	43
OBDII Speed calibration methods .....	44
<b>27. Troubleshooting</b> .....	45

# PROFILE<sup>®</sup> 3 OWNERS MANUAL

Released July 14, 2006

## 1. Introduction

**P**rofile is a PC compatible software designed to be used with the Vericom VC3000 Performance Computer. Profile is a user-friendly Windows program so even beginning computer users can utilize this powerful tool. With Profile you can:

- Organize and analyze data
- Compare data
- Save data to disk
- Graph any combination of X and 8 Y axes
- Display data in a table format
- Make presentation quality Prints
- Retrieve data from disk
- Export data to be used in other applications
- Compensate for Horsepower losses due to wind resistance, frictional drag and aerodynamic drag
- Correct Horsepower and Torque to sea level standards
- Calculate wind drag and frictional drag
- Evaluate numerous formulas
- Move a vertical line cursor along a graph to read instantaneous coordinates
- Graph any segment of a curve
- View the average of many runs
- Display the results of many runs in one window
- Save and reopen a table of runs
- Play back the run with real time analog meters

## 2. Hardware Requirements

The computer must be 100% PC compatible and running Windows 95 or higher and have a USB port or an unused RS232 serial communications port. The USB or RS232 port is for communicating with the VC3000. For USB you must have Windows 2000 or higher. Any printer compatible with Windows will work with Profile.

## 3. Installing Profile

For Windows 95/98/NT/me/2000/XP:

1. Close all Windows applications.
2. Insert Profile Installation CD into your CD-ROM drive.
3. If setup doesn't automatically start, then from the Start menu, choose Run.
  - a. In the Run dialog, type `d:\setup.exe`, where *d* is the letter of your CD-ROM drive.
  - b. Press Enter.
4. The installation program will guide you through the short installation process.
5. When the USB cable is plugged in and the VC3000 is turned on for the first time, Windows will detect new hardware. See page 2 for USB serial port installation.
6. Once installation is complete select Start, Programs, Vericom Computers, Profile 3 to run the program.

We have included some example tests. To open the examples provided use **File|Open...** or press **F4**.

NOTE: Profile 3.x will not import data from the VC2000PC, but Profile 2.x runs can be opened.

## Installing the USB serial Port

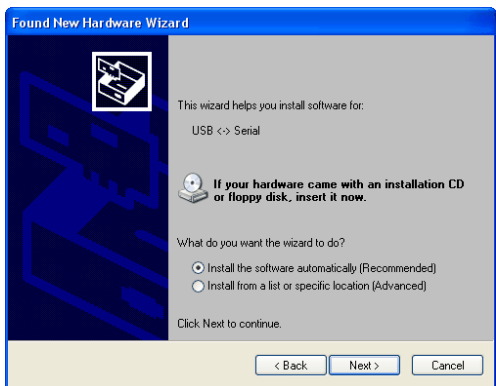
These USB drivers only work with Windows 2000/XP and higher. When the VC3000 is plugged into the USB port for the first time Windows will detect new hardware. Follow this procedure for installation of the virtual serial port.

If you have the Profile installation CD, put it in the CD drive. If the Profile installation starts, click Cancel.

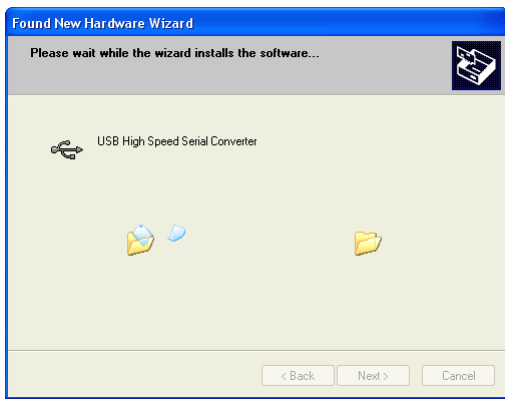
Turn on and connect the VC3000 to a spare USB port on your PC. This will launch the Windows Found New Hardware Wizard. If there is no available Internet connection or Windows XP SP2 is configured to ask before connecting to Windows Update, the screen below is shown. Select "No, not this time" from the options available and then click "Next" to proceed with the installation.



Select "Install the software automatically (Recommended)" and click "Next".



Wait while Windows installs the drivers.



Once the drivers are installed, the following window appears:



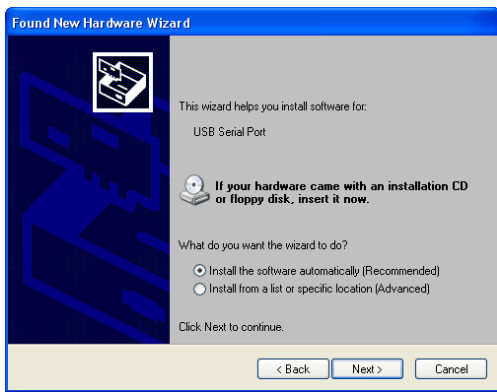
Select Finish.

This completes the first part of installation during which the USB to serial converter is installed. The second part involves the installation of a serial port. This should follow automatically once the converter installation is complete.

Follow the same procedure as above using the files from the CD.



Select "No, not this time" from the options available and then click "Next" to proceed with the installation.

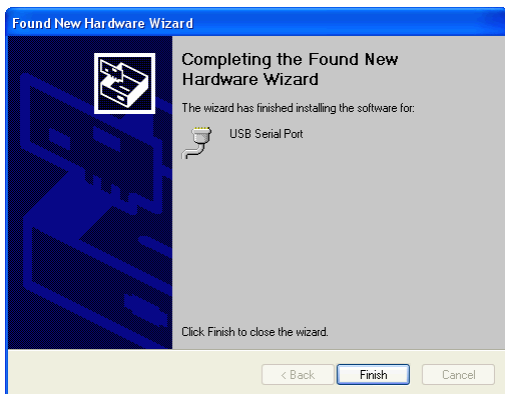


Select " Install the software automatically (Recommended)" and click "Next".

Wait while Windows installs the drivers.



Once the drivers are installed, the following window appears:



Select Finish.

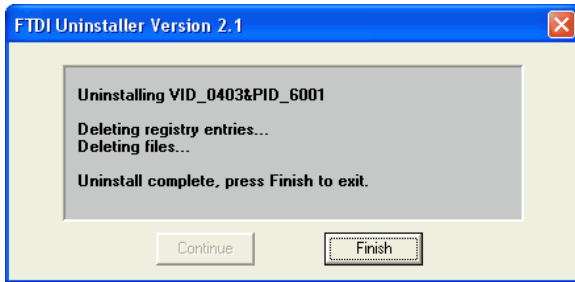
This completes the installation.

### Uninstall of USB drivers

- Unplug the VC3000 from the Computer.
- Open the control panel (Start, Control Panel) and click on "Add or Remove Programs".
- Scroll down the list and find the entry named "FTDI USB Serial Converter Drivers".
- Click the Change/Remove button.
- When the uninstaller opens, click the Continue button.



- When the uninstaller completes, click the finish button.

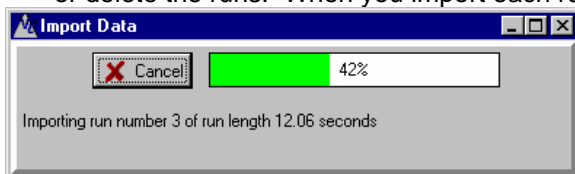


## 4. Quick Start Using Profile

When Profile starts you have the option of opening a run or importing new runs.

### Importing

1. Turn the VC3000 on and connect it to the USB or serial port of your computer.
2. Select **Import|Auto** (or Auto Import Icon) in Profile to import the run headers from the VC3000 to Profile.
3. Now you have the option to open each run to a window, save the runs to disk, export the runs to an ASCII file or delete the runs. When you import each run, this window appears:

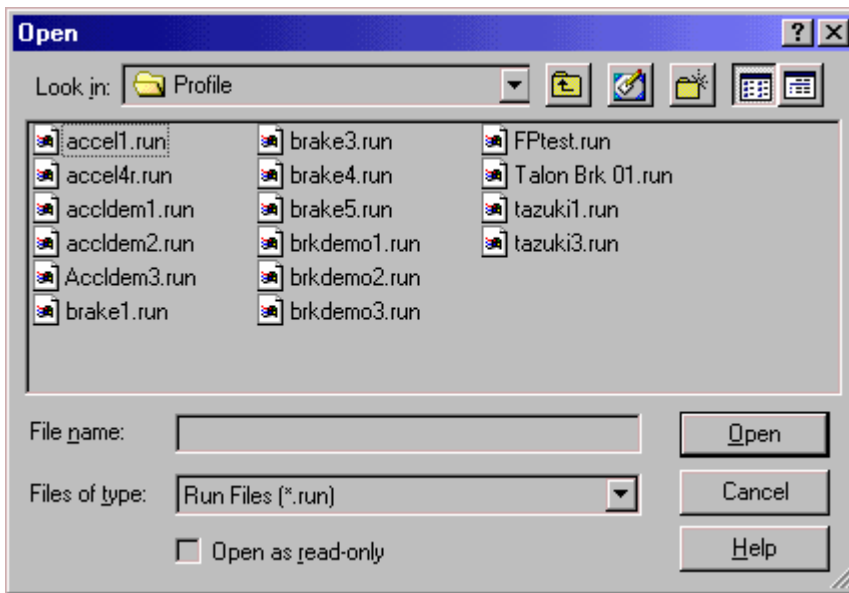


4. If you choose the “To new run Window” option, remember to save the run to disk after uploading is complete and header information is filled out.

See page 6 for details on uploading.

### Opening a saved run

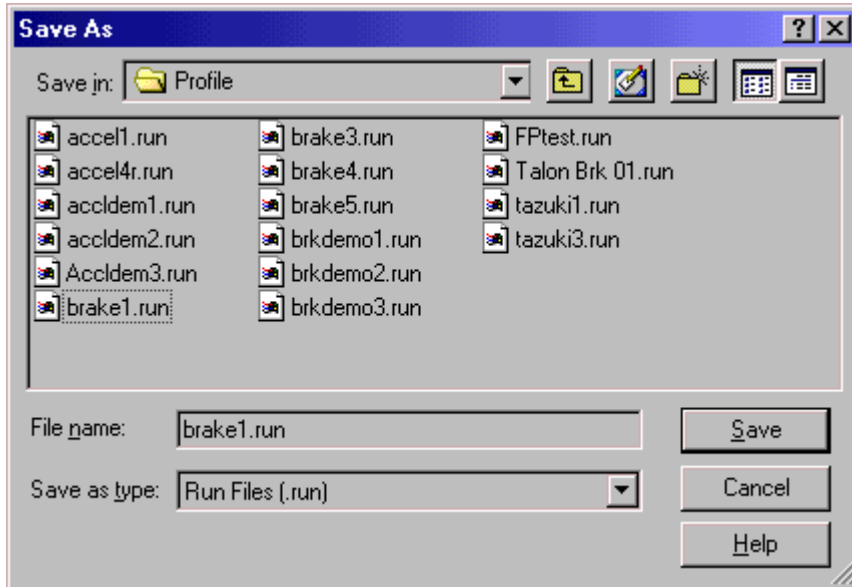
A file saved with Profile can be opened by Profile. It has the default extension .RUN but any extension will work. Use **File|Open**, click the open icon or press **F4** to open the Open dialog box. To change the file type filter to all files select \*.\* from the file type drop down box, or select ASCII Files (\*.csv) to open ASCII files saved from Profile for DOS. Select a file by double clicking on it or select it then click on **OK** in the dialog box.



Previously opened files can also be chosen from the **File** menu in Profile. A list of the most recent 5 opened files is at the bottom of the **File** menu. Select a filename to open it.

## Saving a run to disk

To save a run to disk after making a new run or modifying one select **File|Save** (Ctrl+S) or **File|Save As....** If the file is new or if Save As... is chosen a dialog box will open and you will need to type in a filename. The filename can be any valid windows filename. Profile's default extension is .RUN but any extension can be used.

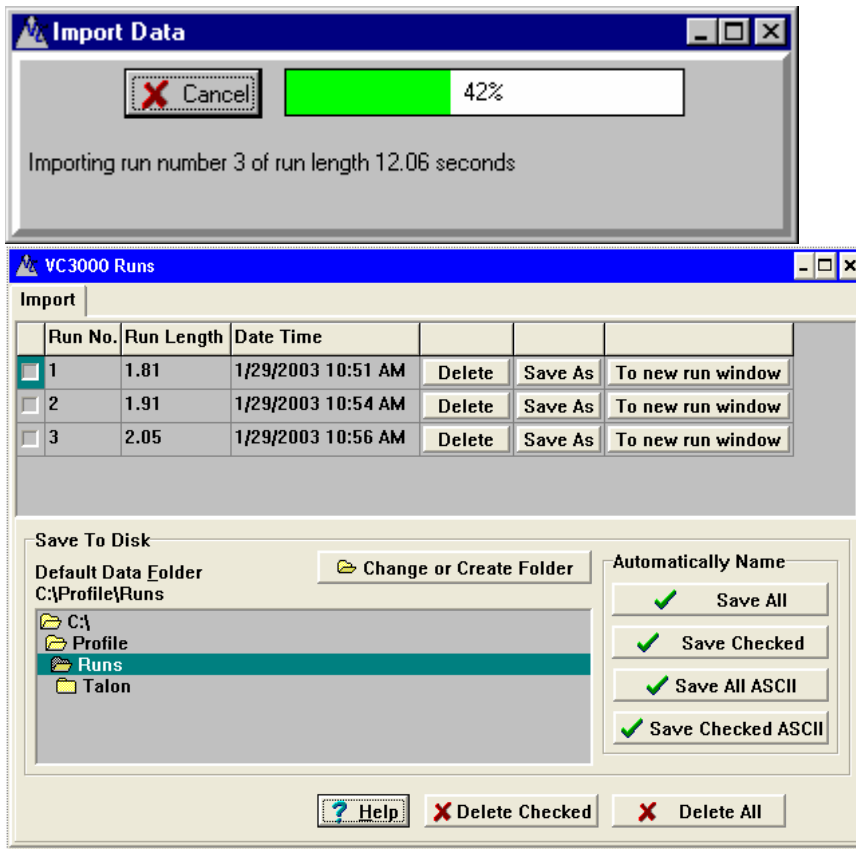


## 5. Importing Data

Automatic import uses the serial port or the USB port. When the VC3000 is plugged into the USB port and turned on for the first time Windows will detect new hardware. See USB Serial Port Installation on page 2. Also, see Profile help for details on confirming USB port installation. See COM port and baud rate in Options on page 42.

Turn on the VC3000 and plug it into the RS232 COM port or a USB port. If using the USB port, be sure the

RS232 is not plugged in. Go to **Import|Auto**, or click on the icon, or press Ctrl+I. Profile will instantly import the available headers into temporary memory.



**Runway Friction Meter models** will create a folder named "RFMRuns-*the current date and time*" as the folder name and select it to save the data to. Click the Save All button to save the data to disk. The folder name RFMRuns-011504-0917'39 for instance has the date in mm,dd,yy format and the time in hr,min,'sec format.

Select the **To new run window** button to import the data and put the run in a window. Then the data can be viewed, graphed or saved.

When the **Save As** button is used for the individual runs, Profile will import the data then give you the opportunity to name the run and select a folder to put it in.

Click the **Delete** button to take the run out of the Import window. This does not delete the run from the VC3000.

When one of the Save buttons in the Automatically Name box are used, Profile will automatically choose a file name of "Runxxx.run", where xxx is the run number preceded by zero's, and continue using the Run Number from the VC3000. Profile will put the files in the Default Data Folder shown in the Save To Disk box.

Use **Save All** to save all the runs in the Import window to disk.

Use **Save Checked** to only save those runs that you manually checked.

Use **Save All ASCII** to save the data to an ASCII file in .CSV format.

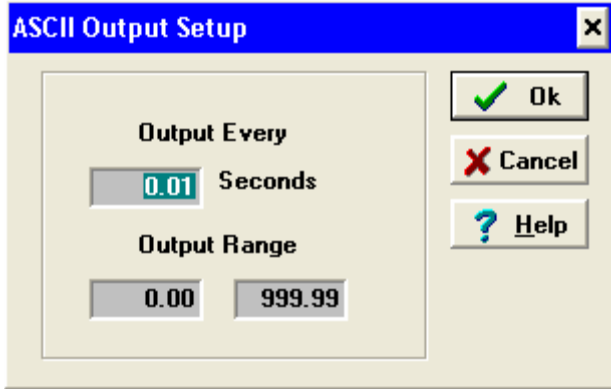
Use **Save Checked ASCII** to save only the checked runs to an ASCII file in .CSV format.

The default data folder may be changed by selecting a different folder from the window, or click the "Change or Create Folder" button to open a folder on another drive or on a network, or to create another folder to put the data into.

## 6. Exporting Data

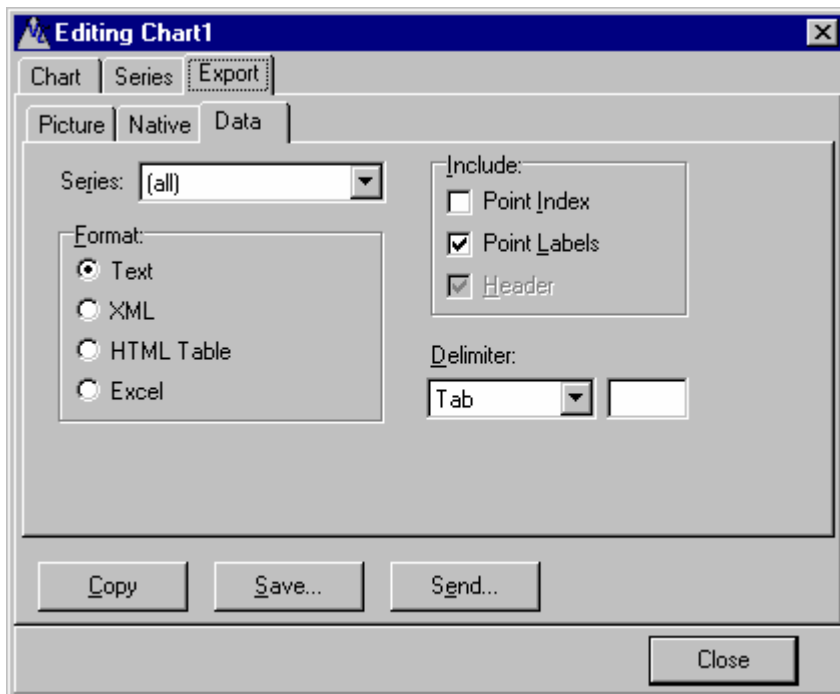
Profile can export run data to ASCII text format, XML, HTML and directly to Microsoft Excel so other programs can use the data Profile provides. There are three methods to export data:

1. When a run is open, use the File menu and select **Save As ASCII...** or **Save As Text**. A window will open to give you a choice of the frequency and range to export the data.



Select the frequency and the range then click Ok. All available data from the VC3000 will be saved in the ASCII or text file. For instance if only 1/10th of a second is enough frequency, then type 0.10 into the "Output Every" box. It will only export the length of the run if the output range is greater than the run length in seconds. Then accept the default file name and folder or type a new one and choose a folder. The data will be saved as *filename.CSV* or *filename.TXT*. Use a spreadsheet or other program that reads .CSV files to open the .CSV file. .CSV files are text files with commas separating the fields and can be opened directly in Excel and other programs. The .TXT files can be opened by any text editor such as notepad or Microsoft Word.

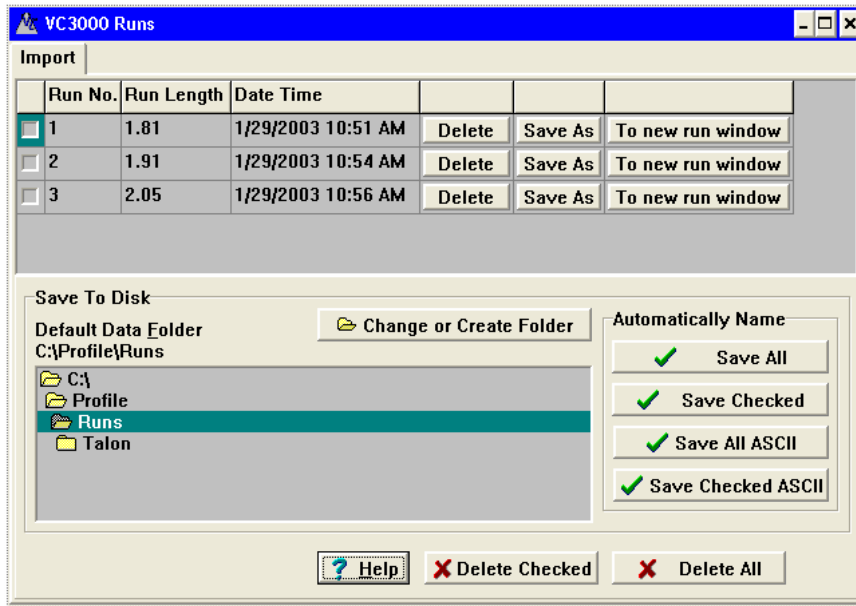
2. To export run data from a graph, first graph the run with all the data you want to export. Then click Graph/Chart Editor or click the Chart Editor icon, then click the Export tab, then the Data tab. Now the data or the picture may be exported to various formats. When exporting data, the graphics program will export the X axis for every Y axis, so the data will have the order X Y1, X Y2, X Y3, etc.



The data will look like the image below. Every other column will be the X axis repeated for every Y axis. In the picture below is a brake test and Time is the X axis, Acceleration (G) is the first Y axis, Speed (mph) is the second Y axis and Distance (ft) is the third Y axis. Select the extra X axis columns and delete them.

	A	B	C	D	E	F	G
1	X	Y	X	Y	X	Y	
2	0	0	0	32.93794	0	0	
3	0.01	-0.236	0.01	32.88617	0.01	0.48271	
4	0.02	-0.26567	0.02	32.82789	0.02	0.964613	
5	0.03	-0.2846	0.03	32.76546	0.03	1.445632	
6	0.04	-0.3114	0.04	32.69715	0.04	1.925691	
7	0.05	-0.3378	0.05	32.62305	0.05	2.404706	
8	0.06	-0.3644	0.06	32.54311	0.06	2.882591	
9	0.07	-0.3976	0.07	32.45589	0.07	3.359251	

- To export run data from the Import window, after importing data from the VC3000 click on either the **Save Checked ASCII** or **Save All ASCII** button. The same steps as saving from the file menu will be used, as in method 1 above.



Use **Save All ASCII** to export all the runs to the Default Data Folder and automatically name them "Runxxx.csv", where xxx is the run number preceded by zero's, and continue using the Run Number from the VC3000. Use **Save Checked ASCII** to export in ASCII format only those runs that you manually checked.

To Export to ASCII and also save the runs to disk as Profile files, simply import the runs from the VC3000 again and click the Save all or Save checked button.

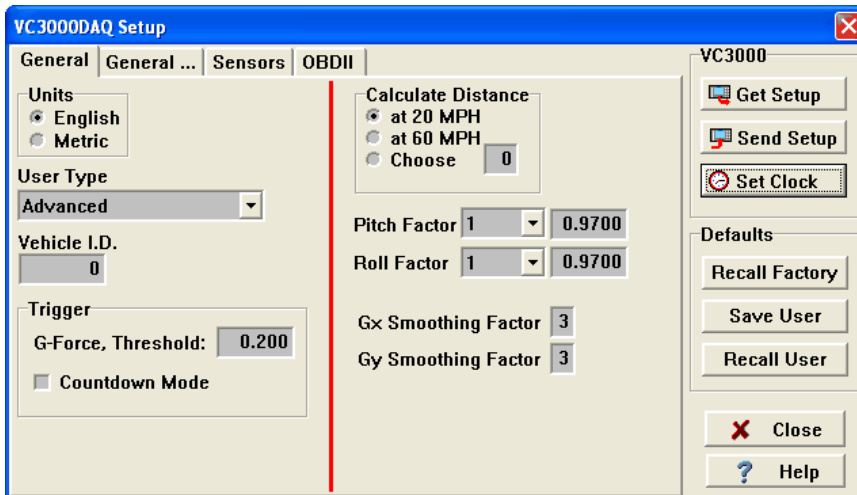
## 7. VC3000 Setup

This window shows all the variables that can be changed in the VC3000. Use this setup in Profile to view and change all the VC3000 settings in one convenient place. These settings only affect the VC3000 and will not change the Profile settings.

### Buttons on the window:

- **Get Setup:** Gets the setup stored in the VC3000.
- **Send Setup:** Sends the new setup to the VC3000. No information is sent to the VC3000 until this button is pushed.
- **Set Clock:** Sets the clock in the VC3000 to the time on your PC.
- **Recall Factory:** Set the variables to the factory default values.
- **Save User:** Saves the current setup to your computers hard drive for later recall.
- **Recall User:** Recalls the setup from the last time Save User was pushed.

Send Setup must be clicked to send the changes to the VC3000.



### Units:

Metric or English units can be displayed by the VC3000.

### Calculate Distance:

The VC3000 will calculate the braking distance for an exact speed if the actual speed is within 5 mph of the target speed. 20 mph and 60 mph are common, but any speed can be used. The distance is calculated assuming the vehicle was going exactly the target speed.

### Pitch and Roll Factor:

See Pitch and Roll Factor on page 20.

### G smoothing:

See G smoothing on page 20.

### Trigger:

The VC3000 can be started by a countdown, by a G force threshold, by a sensor threshold or by an external activation. Only one of the external sensors can be used to start a run. When a sensor is set to start the run, one of three events may trigger the start of a run: the G-threshold, the external activation or the sensor voltage threshold. If you don't want the G-threshold to start the run, set it high, 0.500 G for example. Set the sensor number to 0 to disable the external sensor threshold as a trigger. Check the DAB checkbox if the sensor you want it to trigger on is on the DAB. If the sensor should trigger when the voltage is less than the trigger voltage, check the "Less Than" checkbox. Check the Countdown mode to activate the run after a countdown sequence.

### User Type:

Changing the user type changes the data that is displayed after a test and when runs are selected from memory. In some cases it will change how the test starts and will change other user settings.

### Accident Reconstruction:

#### Display – Brake mode:

- Reaction Time

- Reaction Time distance
- Elapsed Time
- Speed
- Distance
- Avg. Gx
- Avg. Gy
- Peak Gx and the time it occurred
- Peak  $\pm$  Gy
- G every 0.10 sec.

Display – Acceleration mode:

- Time to programmed parameter
- Speed to programmed parameter
- Distance to programmed parameter
- Avg. Gx

**Transit:**

Display – Brake mode:

- Reaction Time
- Reaction Time distance
- Elapsed Time
- Speed
- Distance
- Adjusted Distance to predetermined speed
- Avg. Gx
- Avg. Gy
- Peak Gx and the time it occurred
- 1<sup>st</sup> Peak Gx and the time it occurred under 0.75 seconds

Display – Acceleration mode:

- Time to programmed parameter
- Speed to programmed parameter
- Distance to programmed parameter
- Avg. Gx

**OT - Rehab:**

- Does not zero the accelerometer before a run

Display – Brake mode:

- Reaction Time
- Reaction Time distance
- Elapsed Time
- Speed
- Distance

Display – Acceleration mode:

- Time to programmed parameter
- Speed to programmed parameter
- Distance to programmed parameter
- Avg. Gx

**Advanced:**

Display – Brake mode:

- Reaction Time
- Reaction Time distance
- Elapsed Time

- Speed
- Distance
- Adjusted Distance to predetermined speed
- Avg. Gx
- Avg. Gy
- Peak Gx and the time it occurred
- 1<sup>st</sup> Peak Gx and the time it occurred under 0.75 seconds
- Peak  $\pm$  Gy
- G every 0.10 sec

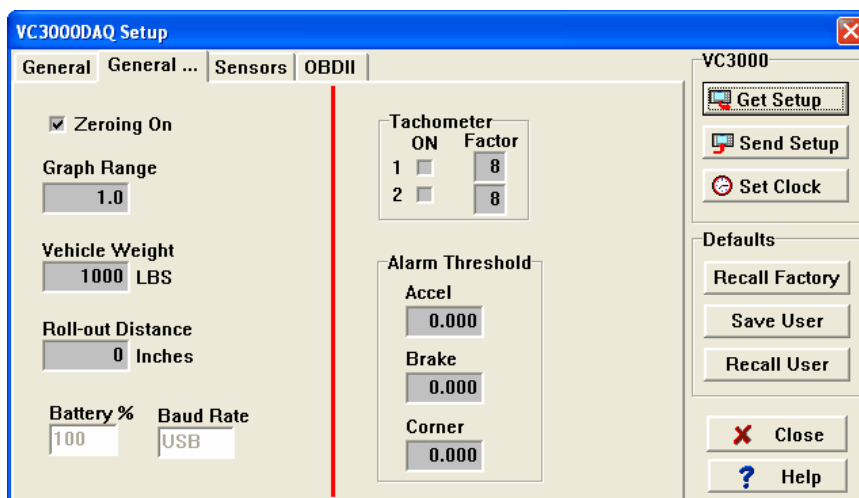
Display – Acceleration mode:

- Time to programmed parameter
- Speed to programmed parameter
- Distance to programmed parameter
- Waypoints
- Avg. Gx
- Avg. Gy
- Peak Gx at time, speed, dist
- Peak Gy at time, speed, dist
- Peak HP at time, speed, dist, torque, RPM

**Vehicle I.D.:**

A 6 digit number identifying the vehicle. The I.D. will print on the thermal printer and will also display in the vehicle field when imported to Profile.

Click on the next General tab (“General...”) to see the less commonly changed VC3000 settings.



**Zeroing On:**

Turn zeroing for the accelerometers on or off. When zeroing is turned off the VC3000 assumes a perfectly level surface. The accelerometers are normally zeroed for incline and temperature changes, but in some cases that may not be desirable. For example if you cannot come to a complete stop to push buttons before the test.

**Graph Range:**

The X and Y axis range of the graphs on the VC3000 can be changed to anything from 0.1 to 2.0. This range only affects the maximum range of the bar graphs and friction circle in continuous mode.

**Vehicle Weight:**

The curb weight of the vehicle. Vehicle weight is used in horsepower and torque calculations only.

**Roll-out Distance:**

The distance the vehicle must travel before the timer, speed and distance start in the VC3000. At a dragstrip for instance the roll-out is generally about 12 inches if you shallow stage. By using the roll-out distance, the VC3000 time and the dragstrip time will match more closely. The VC3000 actually logs all the data, even before the roll-out distance so it can send that information to Profile, but the VC3000 recalculates the time from the roll-out distance. Profile has its own roll-out distance calculation in Quick-Stats.

### Tachometer:

Turn each of the tachometers on by checking the ON checkbox. Tachometer 1 is used for engine RPM and is the tachometer used in torque and gear ratio calculations. Set the Tach Factor from 1 to 99. The Tach Factor represents the number of signals the tachometer gets in 2 revolutions of the engine. If no tachometer is used but the OBDII is connected to the VC3000DAQ and the tachometer is turned on, Profile will use that tachometer information to calculate torque and gear ratio.

Tachometer 2 may be used for drive shaft or wheel RPM.

### Alarm Threshold:

If the alarm thresholds are turned on, the VC3000 will beep when that threshold is reached. Any number greater than 0.000 will turn the alarm on, and 0.000 turns the alarms off.

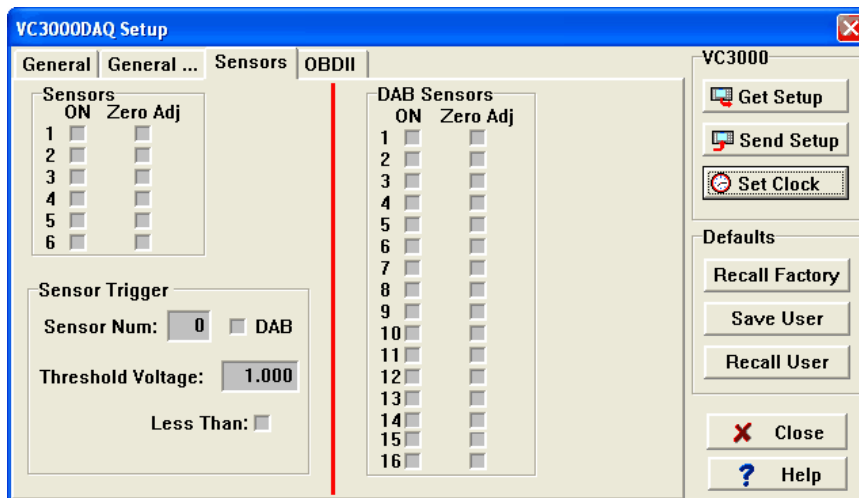
### Battery %:

Indicates the battery percent remaining when the "Get Setup" button is clicked.

### Baud Rate:

Indicates the baud rate that the VC3000 is set to.

Click on the Sensors tab to change or view the VC3000DAQ sensor setup.



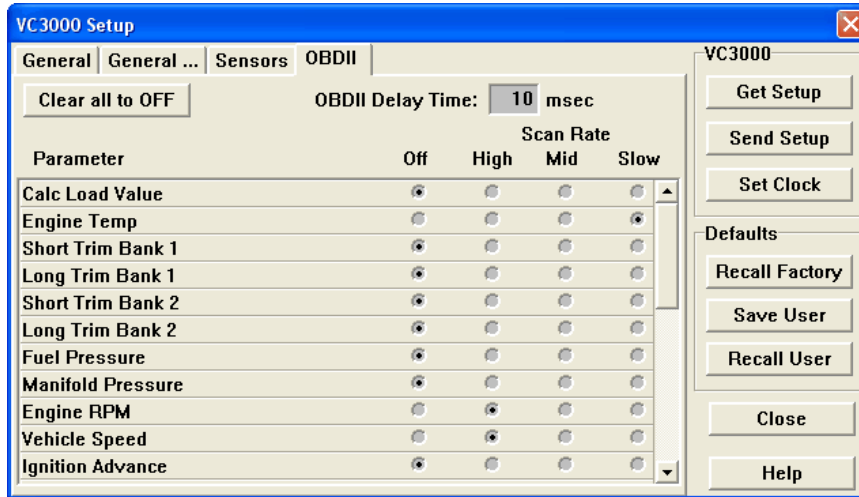
Sensors 1 - 6 are the analog sensors that are connected to the VC3000 or the junction box. The DAB Sensors 1 - 16 are the sensors that are connected to the DAB box. Click the ON check box next to the sensor you want to turn on. Click the Calibrate check box if you want to zero the reading when the VC3000 zero adjusts its accelerometers. **Zero adjusting sensors should only be used for accelerometers, rate gyros or similar sensors.** Other sensors that the units range is balanced above and below zero may also use zeroing, so long as the values are supposed to be zero when the VC3000 zero's them. Sensors that have a units range from 0 to a positive number should **not** be zero adjusted.

### Sensor Trigger:

The VC3000 can be started by a countdown, by a G force threshold, by a sensor threshold or by an external activation. Only one of the external sensors can be used to start a run. When a sensor is set to start the run, one of three events may trigger the start of a run: the G-threshold, the external activation or the sensor voltage threshold. If you don't want the G-threshold to start the run, set it high, 0.500 G for example. Set the sensor number to 0 to disable the external sensor threshold as a trigger. Check the DAB checkbox if the sensor you

want it to trigger on is on the DAB. If the sensor should trigger when the voltage is less than the trigger voltage, check the "Less Than" checkbox.

Click on the OBDII tab to change or view the VC3000DAQ OBDII setup. The OBDII sensors to monitor from the VC3000DAQ can be turned on here.



#### **OBDII Delay Time:**

Sets the number of milliseconds that the VC3000 will delay before sending the next request for OBDII data. Normally this delay is set to 10 milliseconds but some vehicles require a longer delay to function correctly. If the OBDII timeout count (Continuous OBD Mode) increments, either a non-supported OBDII parameter is being monitored or this delay needs to be increased.

#### **CLEAR all to OFF:**

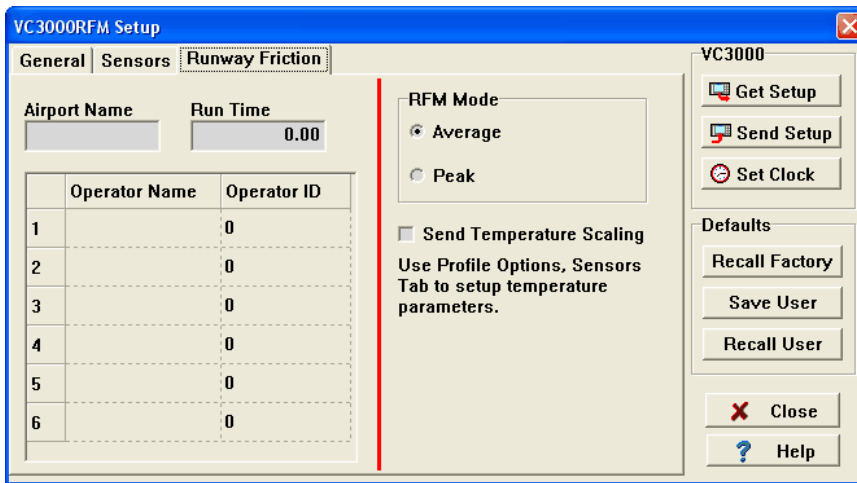
Sets all OBDII monitoring OFF.

#### **Scan Rate:**

Sets the rate of how often the OBDII sensors are read. The more sensors that are turned on, the slower the update rate of all the OBDII sensors. This is due to the vehicles slow update rate of the OBDII interface. So if you are monitoring slowly changing sensors, such as temperature, use Mid or Slow scan rate so the quickly changing sensors are scanned more often.

- OFF Turns OBDII monitoring OFF for the selected parameter.
- HIGH Turns OBDII monitoring ON with scanning set at the highest rate for the selected parameter. Use for fast changing parameters like RPM and vehicle speed.
- MID Turns OBDII monitoring ON with scanning set at middle rate for the selected parameter. This rate scans at the HIGH rate divided by 32.
- SLOW Turns OBDII monitoring ON with scanning set at slowest rate for the selected parameter. This rate scans at the HIGH rate divided by 128. Use this setting for slow changing parameters like temperature.

When an RFM model is connected to Profile the tabs will change to reveal only the information associated with the Runway Friction Meter. Click on the Runway Friction tab to change the RFM only settings.



You can type in the Airport name and operator info here then send the setup to the VC3000.

**Airport Name:**

The name of the airport. This will appear in the report.

**Operator Name:**

The names of the persons performing the tests. Up to 6 users and ID's can be stored in the VC3000.

**Operator ID:**

If the operator has an ID number, type it here. Otherwise leave it blank.

**Run Time:**

The time the VC3000 will record data for in a braking test. For instance, if the Run Time is set to 1.0 second the VC3000 will start when the G threshold is broken and stop after sampling for 1 second, which is 100 samples. When the Run Time is set to anything other than 0, the VC3000 assumes you will not be coming to a complete stop and will not calculate speed or distance. Profile will calculate speed and distance when viewing the individual run, but they will not be accurate because you did not come to a complete stop.

**RFM Mode:**

Normally electronic decelerometers use average acceleration for the friction number of runways and taxiways but the VC3000 has a setting where it will use the peak acceleration to be compatible with old mechanical devices. Note that on ice peak may be two or more times higher than average.

**RFM Sensors 1 and 2:**

To setup a different temperature sensor, use Tools/Options and set sensors 1 and 2 to the correct ranges, then click on VC3000 Setup again and send the new settings to the VC3000. Factory default values are: Sensor 1 is 1V to 5V and units range of -40 to 140. Sensor 2 is 0V to 5V and units range of -40 to 200.

Send Setup must be clicked to send the changes to the VC3000.

## 8. Header Information

The information such as vehicle name, location, date, etc. is called the header for the run. By changing some of the variables such as weight or flatplate area, Horsepower and Torque calculations are affected. Select **View|Header** from the menu or click on the Header tab at the top of the run page and all run header variables for the run will be displayed. Following is a description of each header variable.

**Vehicle and Location:**

Up to 30 characters each.

**Date and Time:**

The VC3000 will send the date and time that the test was performed.

**Run Number:**

The run number will be uploaded automatically from the VC3000.

**Run Length:**

Length of the run in seconds. This field cannot be modified. In brake runs you may notice that when uploading the run the time is about 0.20 seconds greater than the run length of the VC3000. It will be readjusted after the run is uploaded. See page 25 for more information on brake run time.

**Weight:**

The weight is for Horsepower and Torque calculations only. It should include vehicle and passenger weight. Weight is uploaded from the VC3000 when the run is transferred to Profile. It can be changed in at any time and Profile will recalculate HP and Torque.

**Drag:**

Drag is the frictional drag including bearings, U-joints, tires, etc. The higher the drag you type in, the more Profile will increase the Horsepower to compensate.

**FlatPlate:**

FlatPlate area is the aerodynamic drag area of the vehicle including the windshield slope, body curves and wind drag under the vehicle. FlatPlate area only affects the horsepower and torque over about 60 mph where wind drag becomes large. The larger the flatplate area the more profile will increase horsepower and torque. With a flatplate area of 0, altitude and wind have no affect on the horsepower and torque calculations.

As long as Altitude, Temperature, Wind, Humidity, Barometric pressure, Drag and FlatPlate are consistent, they do not need to be accurate to get comparison data. If engine modifications are made to the vehicle the changes will still display if they are dramatic enough to affect the vehicle.

**Wind:**

Use + for a headwind and - for a tailwind. Wind only affects HP and torque numbers if flatplate is greater than 0.

**Temperature:**

Flatplate area compensation and adjusting to sea level use temperature in the calculations. Generally the warmer it is the less HP the engine will make. The default and standard temperature is 60°F.

**Humidity:**

Relative Humidity is the ratio of the amount of water vapor in the air at a specific temperature compared to the maximum amount that the air could hold at that temperature, expressed as a percentage. In a high humidity environment an engine can't get as much oxygen as it would in a low humidity environment therefore decreasing Horsepower.

For Profile to accurately calculate the sea level standard HP and Torque it needs to know the correct Relative Humidity on the day of testing. The humidity variable affects Horsepower at sea level (HP SL) and Torque only. The higher the humidity when testing, the more Profile will increase the Horsepower to compensate back to 0 %.

Type a number representing the percentage humidity into the humidity variable location in the header for the current run. You can find the correct humidity with a store bought meter, from a weather site on the Internet or from the national weather service.

**% HP loss:**

Horsepower losses are due to the power it takes to accelerate the inertia of the rotating masses (crankshaft, flywheel, transmission gears, tires, etc.) and due to frictional losses. Some of the frictional losses are accounted for using Drag but since power is not applied when this measurement is taken the extra friction under a load is not measured.

After all variables are entered you should have HP values for a standard day at sea level, and after the % HP Loss variable is entered you should have HP values that represent what an engine dyno would give. Generally % HP loss will be 15% to 25%. An optimist would say 25% and a pessimist would say 15%. It varies depending on transmission type and the amount of friction in the system.

The best representation of maximum HP is in top gear because gear reduction loss in the higher gears is less.

% HP Loss affects Horsepower, Corrected Horsepower and Torque calculations only.

**Smooth HP (Smooth Factor):**

The Smooth Factor is used in Horsepower and Torque calculations only. It is for making the graph appear more uniform. Small changes in G force become amplified when multiplied to get HP. This makes the graph look erratic. A smooth factor of 10 or 20 usually looks the best. The smooth factor averages the horsepower and torque by the number used. A smooth factor of 50 uses 50 samples before and 50 samples after the current sample and divides by 101 to get the average value for the current sample.

**Barometric Pressure:**

Barometric pressure is atmospheric pressure, the force exerted on a surface by the weight of the atmosphere, corrected to sea level. Standard barometric pressure at sea level is 29.921 inches of mercury (Hg). The more pressure available the easier an engine can pull the air in. The variable barometric pressure in Profile is used only to calculate Station Pressure. Barometric pressure is the value given by weather stations or most other sources of weather. It includes Station Pressure and correction for altitude and is referred to as corrected pressure. Profile uses Station Pressure for its calculations, not Barometric Pressure.

**Station Pressure:**

Station Pressure is the Absolute Pressure. Absolute pressure is the pressure at the altitude you are at. Using barometric pressure and altitude Profile can calculate Station pressure. Most gauges and the weather stations give barometric pressure. Station pressure is used in Profile to correct HP and Torque to sea level values.

**Altitude:**

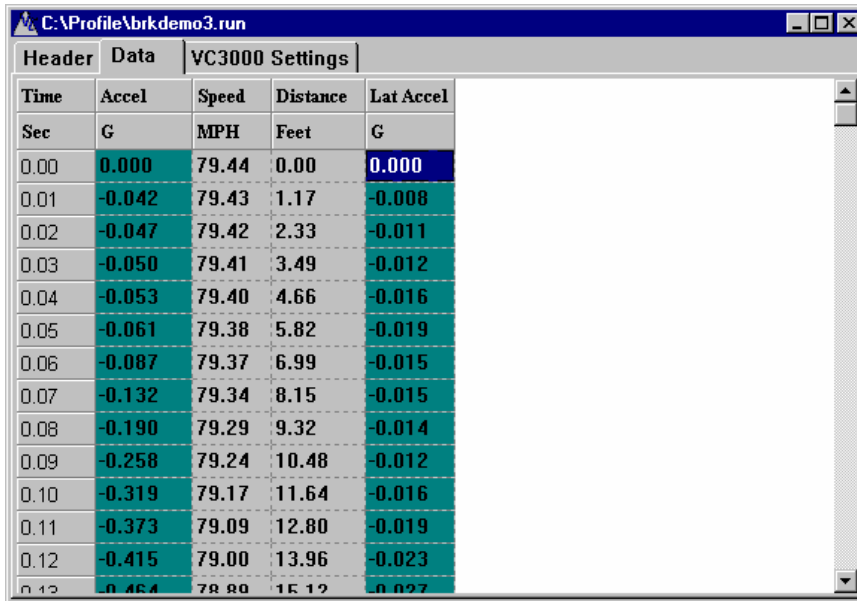
The Altitude header variable is used in compensating HP and Torque for wind resistance, and for calculating Station Pressure if Barometric Pressure is known. It's also used for calculating flatplate area. If flatplate area is 0 then Altitude has no effect on uncorrected HP. At higher altitudes pressure is less therefore less air molecules to affect the flatplate of the vehicle. This number should be actual Altitude from sea level, not adjusted altitude. Profile calculates adjusted altitude internally to compensate for barometric pressure, humidity and temperature effects.

**Braking runs and header information:**

Brake runs will not show the Smooth Factor, Altitude, Temperature, Wind, Humidity, Barometric pressure, Station Pressure, Drag or FlatPlate for a Brake test because only horsepower and torque are affected by these variables.

## 9. Viewing Data

Select **View|Data** from the menu or click on the Data tab at the top of the run window and all data available for the run will be displayed. Brake runs will have only Time, G, Speed and Distance. In an acceleration run Time, G, Speed, Distance, HP and HP at Sea Level are shown. If the tachometer was used for acceleration runs then RPM, Torque and Gear ratio will also be shown. If extra sensors were used the sensors with the names and units you gave them will also be shown. Sensors can be turned on and off in **View|Sensor Setup...** or by clicking on the Sensor Setup tab at the top of the run window. The Sensor Setup tab only appears if sensors were used in the test.

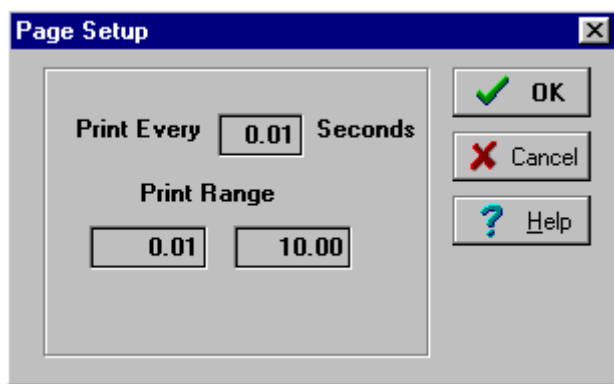


The screenshot shows a software window titled 'C:\Profile\brkdemo3.run' with a 'Data' tab selected. The window displays a table with the following data:

Time	Accel	Speed	Distance	Lat Accel
Sec	G	MPH	Feet	G
0.00	0.000	79.44	0.00	0.000
0.01	-0.042	79.43	1.17	-0.008
0.02	-0.047	79.42	2.33	-0.011
0.03	-0.050	79.41	3.49	-0.012
0.04	-0.053	79.40	4.66	-0.016
0.05	-0.061	79.38	5.82	-0.019
0.06	-0.087	79.37	6.99	-0.015
0.07	-0.132	79.34	8.15	-0.015
0.08	-0.190	79.29	9.32	-0.014
0.09	-0.258	79.24	10.48	-0.012
0.10	-0.319	79.17	11.64	-0.016
0.11	-0.373	79.09	12.80	-0.019
0.12	-0.415	79.00	13.96	-0.023
0.13	-0.464	78.88	15.12	-0.027

**Printing the data**

The entire table of values of the current open run can be printed. First open a file. Next select **File|Print....** A dialog box will open allowing you to choose the print frequency and the range. It will default to the run length and every 1/100 sec.



When you click OK the Print dialog box opens. Click OK to send the data to the printer.

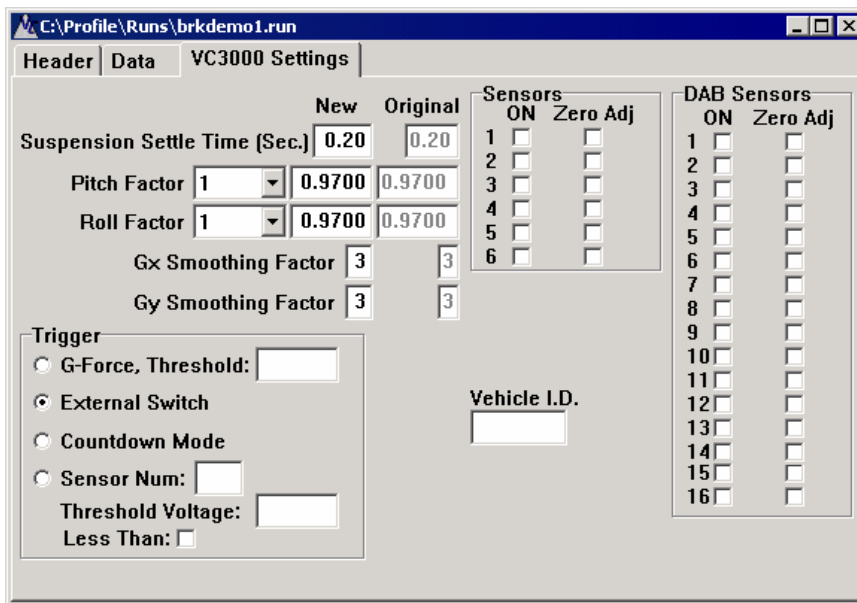
# 10. VC3000 Settings

The settings show how the VC3000 was setup for each run. This tab is mostly for reference, but some values may be changed. Suspension Settle time, Pitch and Roll Factor and Smoothing factors may be changed to finely adjust the data.

The original values are not editable. They are the values the VC3000 had when the run was performed. The Trigger box shows how the VC3000 started, with a G Force threshold, external switch, countdown mode or one of the sensors. If a sensor started the run, it will display the sensor number and the voltage that triggered it. If the sensor was set to trigger when the voltage was less than the threshold voltage, then the "Less Than" check box would be checked. If it was set trigger when the voltage was greater than the threshold, then the check box would not be checked.

The sensors that were turned on will have a check mark. If it was set to calibrate the sensor, that check box will be checked.

Brake runs only show the necessary information for brake runs, no weight, rollout distance or tachometer.

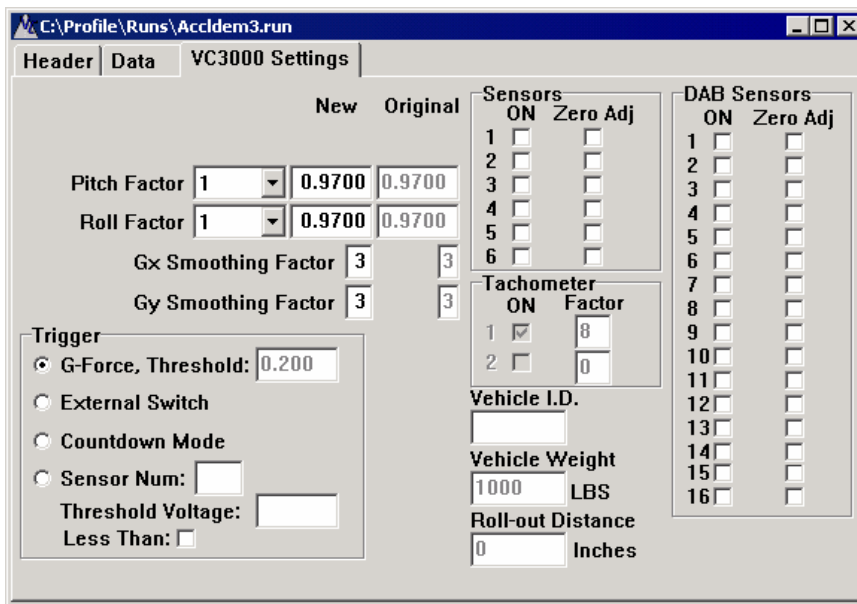


## Suspension Settle time:

Suspension Settle time is calculated in the VC3000. It is the time it takes for the suspension to unload after the vehicle stops. It looks for changes in the curve and intelligently calculates where the vehicle actually stopped. Sometimes it is impossible to calculate the suspension settle time and therefore the VC3000 will use a default of 0.20 seconds. Also sometimes it will miscalculate the settle time because of an abnormal curve. Change the Gx smoothing for the run to 2 and look at the graph to determine if the settle time is close if you question it. If it looks wrong, click on the VC3000 Settings tab for the run and change it to where you think it should be. Look for where the curve changes to a steep angle.

Average G is affected very little or not at all, speed is affected a little and distance is affected the most by changes in suspension settle time.

**Acceleration and continuous runs** show only the necessary information for acceleration runs, no settle time.



**Pitch and Roll Factor:**

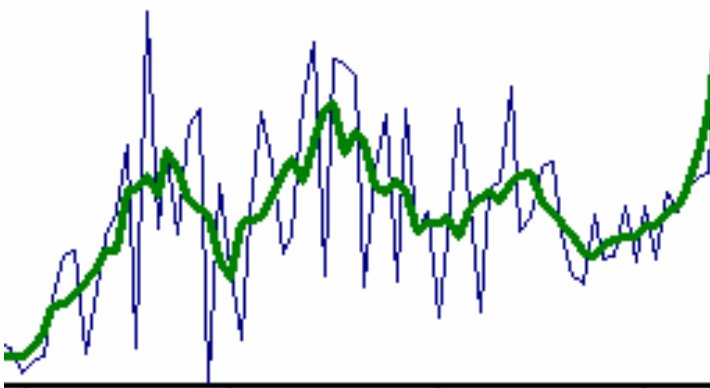
The Pitch and Roll factors are numbers that Profile multiplies with G. By typing in 1.03 Profile will multiply every G value 1.03. By changing the Pitch factor; G, distance, speed, horsepower and torque are affected. By changing the Roll factor only Lateral G is affected. Generally the Pitch factor and Roll factor should be 0.970. The VC3000 Pitch factor and Roll factor are passed to Profile so the data will match.

The only time the Pitch factor should be adjusted in Profile is if you did not adjust the Pitch factor in the VC3000. The only time to adjust the Pitch factor in the VC3000 is if vehicle is an experimental or non highway vehicle such as rail cars or boats or for low friction surfaces like ice when the average G is less than 0.250 G. For example when brake testing on ice the Pitch factor in the VC3000 should be set to 0, not the default 1. This is because the suspension tilt is nominal. This will affect **all** the calculations made by Profile.

**G smoothing:**

Smoothing is used to eliminate some of the vibration associated with vehicle testing. Smooth factors from 0 to 9 may be entered. The smooth factors affect the VC3000 calculations very little. The G data sent to Profile is the raw data before smoothing and Profile uses the VC3000's smooth factor by default, but can be changed for more or less smoothing effect.

The thick line is a smooth factor of 3 and the jagged line has no smoothing.



# 11. Sensor Setup

Select **View|Sensor Setup...** or click on the Sensor Setup tab at the top of the run window to change the sensor names, units, ranges or activation of each sensor. Up to 6 sensors can be added directly to the VC3000DAQ through a junction box and up to 16 more sensors can be added to the optional Data Acquisition Box (DAB) for a total of 22 additional analog sensors. The Data Acquisition Box is an analog to digital converter box that includes 12-bit Analog to Digital converters, regulated 12V and 5V outputs and its own battery pack. Sensors must be in the range of 0 to 5V.

This sensor setup window lets you activate or deactivate each sensor, give each sensor a unique name and units, and set the scaling for each sensor. Scaling is set using the Units Range High and Low, and the Input Volts High and Low. If you bought a sensor from Vericom, it may be in the predefined Sensor List **...**.

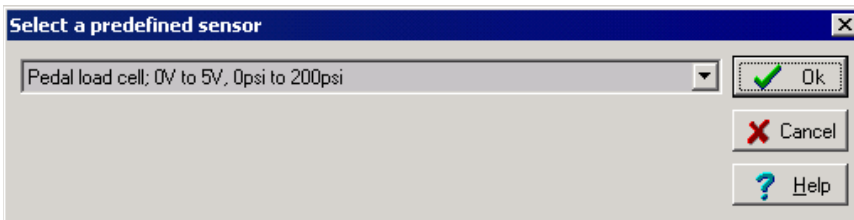
The Low or High range can be any number between -99999.999 and +99999.999.

Active sensors are set automatically when importing a run from the VC3000DAQ. Once the file is transferred to Profile, any sensor can be activated or deactivated by clicking on its Active check box. The first 6 sensors are the ones that were connected to the VC3000DAQ or junction box. The rest of the sensors are the ones that were connected to the DAB. Sensors that were on during the run will still appear in graph, display average and the rest of Profile regardless of the checkbox status.

The Sensor Setup tab will only appear if one or more external sensors in the VC3000DAQ were turned on. Select **View|Sensors** from the menu or click on the Sensor Setup tab at the top of the run page to set the values for Name, Units and Range. Use Options to set the default sensors for all imported runs.

Active	Sensor List	Name	Units	Units Range		Input Volts		
				Low	High	Low	High	Smooth
<input checked="" type="checkbox"/>	...	Pedal force	lbs	0.000	200.000	0.000	5.000	0
<input checked="" type="checkbox"/>	...	Rate Gyro	deg/sec	-90.000	90.000	0.500	4.500	5
<input type="checkbox"/>	...			0.000	1.000	0.000	5.000	0
<input type="checkbox"/>	...			0.000	1.000	0.000	5.000	0
<input type="checkbox"/>	...			0.000	1.000	0.000	5.000	0
<input type="checkbox"/>	...			0.000	1.000	0.000	5.000	0
<input type="checkbox"/>	DAB 1	...		0.000	1.000	0.000	5.000	0
<input type="checkbox"/>	DAB 2	...		0.000	1.000	0.000	5.000	0
<input type="checkbox"/>	DAB 3	...		0.000	1.000	0.000	5.000	0
<input type="checkbox"/>	DAB 4	...		0.000	1.000	0.000	5.000	0
<input type="checkbox"/>	DAB 5	...		0.000	1.000	0.000	5.000	0
<input type="checkbox"/>	DAB 6	...		0.000	1.000	0.000	5.000	0

To choose a pre-defined sensor, click on the Sensor List button next to the sensor. The following dialog appears. Click the down arrow to choose from the list of pre-defined sensors.



You may also edit the Range low, high and the Voltage low and high fields directly by typing numbers into them.

You can add your own sensors to the list by modifying the Profile.ini file in the Windows folder. Double click on the Profile.ini file then find the section titled [PresetSensors]. Go to the bottom of the list and add the 6 fields necessary for each sensor. Use the same number after the field name for the same sensor. It is best to start your custom sensors with 99 and decrement so they do not interfere with any future factory preset sensors. See the example below.

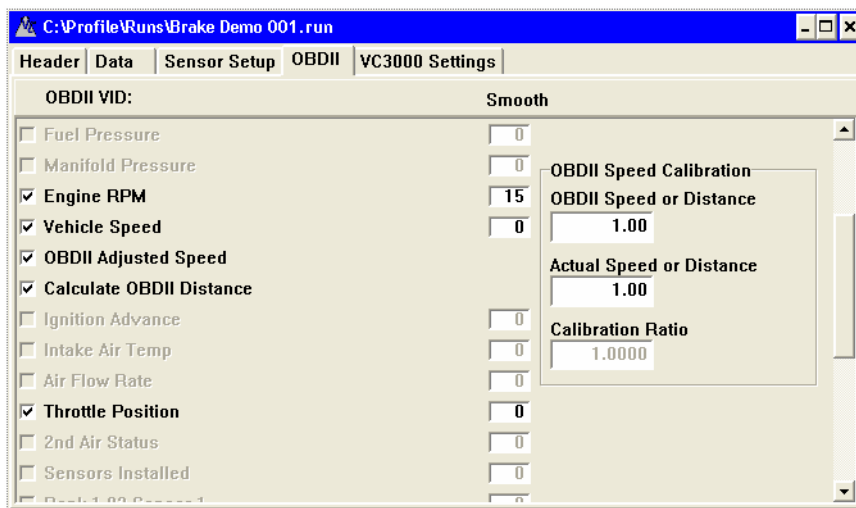
example:

```
[PresetSensors]
.
.
.
Name13=Switch
Units13=on/off
Base13=0
High13=5
InputLow13=0
InputHigh13=5 new ones after this:
Name99=custom1
Units99=Units1
Base99=0
High99=5
InputLow99=0
InputHigh99=5
Name98=custom2
Units98=Units2
Base98=0
High98=5
InputLow98=0
InputHigh98=5
```

After editing the Profile.ini file, save the changes to disk.

## 12. View OBDII sensor setup

Select **View|OBDDII Sensor Setup** from the menu or click on the OBDII tab at the top of the run page and the OBDII sensors and their settings will be displayed.



If the sensor was turned on for the run it will have a check mark next to it. Sensors that were not turned on are grayed out and unchecked. To hide an OBDII sensor column in the data window, uncheck the sensor. Sensors that were on during the run will still appear in graph, display average and the rest of Profile regardless of the

checkbox status.

**Smooth number:** Since OBD has a relatively slow update rate, it usually looks like a staircase pattern. To compensate for this, each OBDII parameter can be smoothed by typing a number into the Smooth box next to each sensor. Numbers from 0 to 99 are allowed.

**OBDII Speed Calibration** is for converting the OBDII reported speed to actual speed. See OBDII Speed Calibration methods on page 44.

**OBDII Adjusted Speed** is calculated by smoothing the data from the OBDII vehicle speed and by multiplying by the Speed Calibration Ratio calculated in the box next to Vehicle Speed.

**Calculate OBDII Distance** is calculated from the OBDII Adjusted Speed. Changes to the OBDII Speed Calibration will also affect the OBDII distance calculations since it uses the adjusted speed data to calculate the OBDII distance.

## 13. Runway Friction Meter Steps

Typical steps to import and view a report from a VC3000RFM.

1. Perform tests on runway.
2. Connect VC3000RFM to Profile (through wireless link, RS232 or USB cable.)
3. Click the Import button (or menu item **Import|Auto**).
4. Click on the "Save All" button. Click the "OK" button when it finishes importing the data.
5. Click on the Runway Friction Report button (or menu item **Tools|RFM Report**).
6. An open dialog box displays showing the imported runs. Click the Open button to select this folder.
7. See page 24 for report details.

## 14. View Each Runs Information

To open an individual run, close the Runway friction report window if it is open, and then click the Open button (or **File|Open...**). Find the run you want and double click it or select it then click Open.

When a VC3000RFM is used with Profile, another tab with the airport information appears for each runs data. This is information that was downloaded with the VC3000 data. Only the Airport Name, Operator Name and Operator ID can be changed.

**Airport Name:**

The name of the airport the testing was conducted at.

**Operator Name:**

The name of the person who performed the test.

**Operator ID:**

The ID number if any of the operator.

**Runway:**

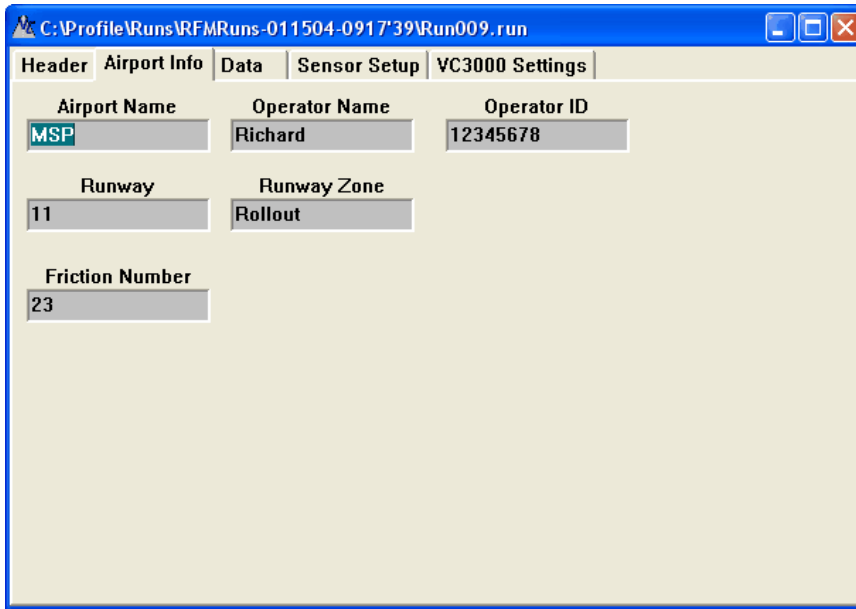
The runway or taxiway designator.

**Runway Zone:**

The zone tested in this run. It will be Touchdown, Midpoint or Rollout.

**Friction Number:**

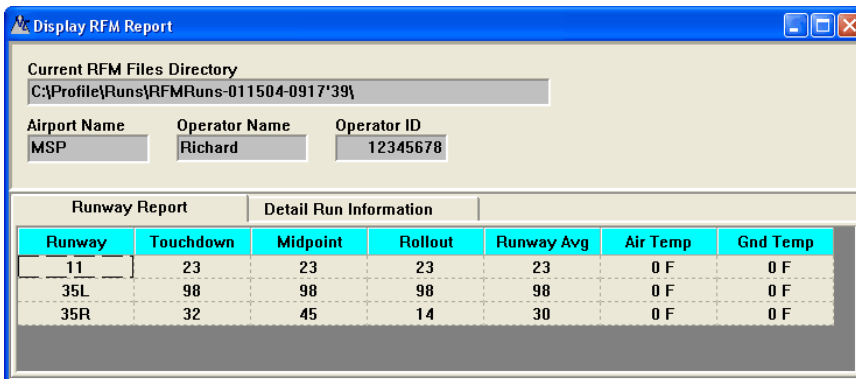
The friction value for the segment of runway tested in this run. It is the average acceleration rounded to the nearest 1/100th G then multiplied by 100 to get a whole number. 23 is actually -0.230 average acceleration.



## 15. Runway Friction Meter Report

To display a report you must first import the data to a folder. See Importing data on page 6. Then select **Tools|RFM Report** or click the RFM Report icon. Then select the folder with the runs you want and click the Open button on the lower right.

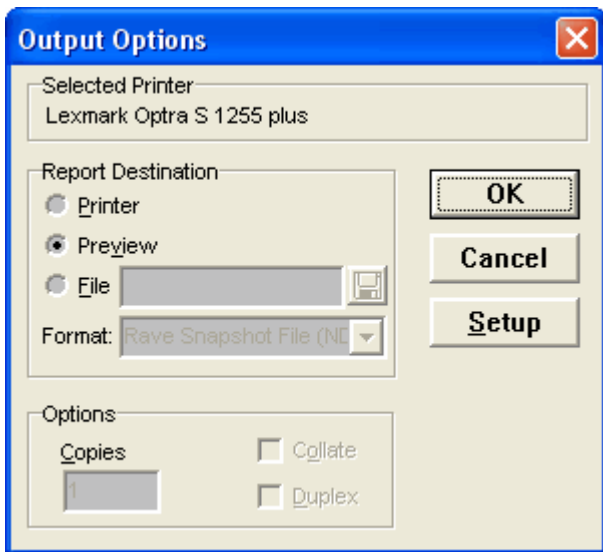
The Runway Report tab shows the summary of the tests.



The Detail Run Information tab shows the data from each test. To delete a run from the summary tab, click the Deleted check box next to the run you want to delete. It can be added back in at any time by unchecking the Deleted check box. FN is the Friction Number for the individual test. Individual tests can be opened by closing the report window then clicking on the Open icon. Find the folder with the runs in it and double click on a .run file.

Runway Report		Detail Run Information					
Run	Runway	Zone	FN	Time	Air Temp	Gnd Temp	Deleted
1	11	Touchdown	23	08:30 AM	0 F	0 F	<input type="checkbox"/>
2	11	Touchdown	23	08:30 AM	0 F	0 F	<input type="checkbox"/>
3	11	Touchdown	23	08:30 AM	0 F	0 F	<input type="checkbox"/>
4	11	Touchdown	23	08:30 AM	0 F	0 F	<input type="checkbox"/>
5	11	Midpoint	23	08:30 AM	0 F	0 F	<input type="checkbox"/>
6	11	Midpoint	23	08:30 AM	0 F	0 F	<input type="checkbox"/>
7	11	Midpoint	23	08:30 AM	0 F	0 F	<input type="checkbox"/>
8	11	Rollout	23	08:30 AM	0 F	0 F	<input type="checkbox"/>
9	11	Rollout	23	08:30 AM	0 F	0 F	<input type="checkbox"/>
10	11	Rollout	23	08:30 AM	0 F	0 F	<input type="checkbox"/>
11	11	Rollout	23	08:30 AM	0 F	0 F	<input type="checkbox"/>
12	35L	Touchdown	98	08:32 AM	0 F	0 F	<input type="checkbox"/>
13	35L	Touchdown	98	08:32 AM	0 F	0 F	<input type="checkbox"/>
14	35L	Touchdown	98	08:32 AM	0 F	0 F	<input type="checkbox"/>
15	35L	Midpoint	98	08:32 AM	0 F	0 F	<input type="checkbox"/>
16	35L	Midpoint	98	08:32 AM	0 F	0 F	<input type="checkbox"/>
17	35L	Midpoint	98	08:32 AM	0 F	0 F	<input type="checkbox"/>
18	35L	Rollout	98	08:32 AM	0 F	0 F	<input type="checkbox"/>
19	35L	Rollout	98	08:32 AM	0 F	0 F	<input type="checkbox"/>
20	35L	Rollout	98	08:32 AM	0 F	0 F	<input type="checkbox"/>
21	ABD	Touchdown	38	08:33 AM	0 F	0 F	<input type="checkbox"/>

To print a report click on the printer button. Now you can preview it and print it, or print immediately, or save to disk in several different formats.



From the preview screen you can also print it or save it in several different formats.

## 16. Brake Test Calculations

In a braking test the G values for the **suspension settle time** at the end of the run, usually 2 tenths of a second, are not used in any calculations because these values are a result of the suspension settlement. In fifteen years of testing we have found the suspension settle time to vary 0.10 to 0.23 seconds. Varying the settle time by +/- 0.13 sec. makes **very little or no difference** in the **average G calculations**. It will have the most effect on the **distance** calculation. You will notice the complete test including the suspension settle time is included in the graph but the calculations do not include the suspension settle time G values.

To change the suspension settle time use the VC3000 Settings tab for the run. The settle time shows 2 values. "New" is editable and changes where the end of the test is, and "Original" will show what the VC3000 calculated for the settle time.

When comparing the VC3000 to other methods of speed, distance or drag factor calculations be sure you understand how the VC3000 works. For instance: When comparing a **bumper chalk gun** distance to the

**VC3000** distance the two have to trigger at the same time. This means using the **external activation switch** of the VC3000 and connecting it to the same source that activates the bumper chalk gun. The bumper chalk guns distance must also be compensated for its **mechanical reaction time**, usually 0.04 seconds, since the VC3000 activates instantly and it takes some time from the when the power to the chalk gun starts to when the chalk actually hits the pavement. When using the VC3000 external activation switch mechanical reaction time is now included in the VC3000 calculations and **drag factor** is not correct for the road surface. To **compensate** for this use Calc Average to eliminate the mechanical reaction time. Find the time from the graph or data where the VC3000 first reaches 0.200 G. Use that as the start time and use Profile's default end time (DO NOT include the suspension settlement).

To measure **true drag factor** it is recommended that the VC3000 be activated by its default 0.200G threshold.

When comparing speed it will not make a significant difference whether the VC3000 is started using the brake lights or the 0.200 G threshold.


Notice that when **distance** is used to calculate **average G**, error in average G can occur. This is due to the fact that the calculation **assumes constant G** and in a typical skid, G is not constant. Summing the G samples and dividing by the number of samples is the **true scientific** way to get average G and **Drag Factor**. Using the speed divided by time method is the same as summing the G samples and dividing by the number of samples since speed is the summation of G values and is the area under the Time-G curve.

#### **Braking runs and header information:**

Braking runs only show the necessary header information. There is no need to change the default values for Weight, Smooth Factor, Altitude, Temperature, Wind, Humidity, Barometric pressure, Station Pressure, Drag, FlatPlate or % HP loss for a Brake test. Only horsepower and torque are affected by these variables.

## **17. Quick Stats for acceleration runs**

Quick stats is used for retrieving statistical data from the run similar to the displayed statistics from the VC3000.


Open an acceleration run then click the icon for Quick Stats  or choose **Tools|Quick Stats** from the menu. Time at the distance points is interpolated to the nearest 1/1000th of a second. Average HP SL and Average Torque are calculated up to the time, speed or distance point. In the case of a range such as 35MPH to 70MPH the Average is within the range. The range 35MPH to 70MPH is an example of a range to select when looking for the peak Horsepower in one gear. You will need to add a different range for your car if it shifts at different points. Without flat plate area and the other header variables generally you want to pick a gear that that max.'s out under 70 MPH because after that wind resistance decreases Horsepower. If you have your cars flat plate area typed into the header usually you will get peak HP in high gear. HP in lower gears is reduced by the amount of power it takes to increase the speed of the mass of the lower gear ratios.

"---at Pk HP" and "---at Pk Torq" refers to the statistics within the range above it.

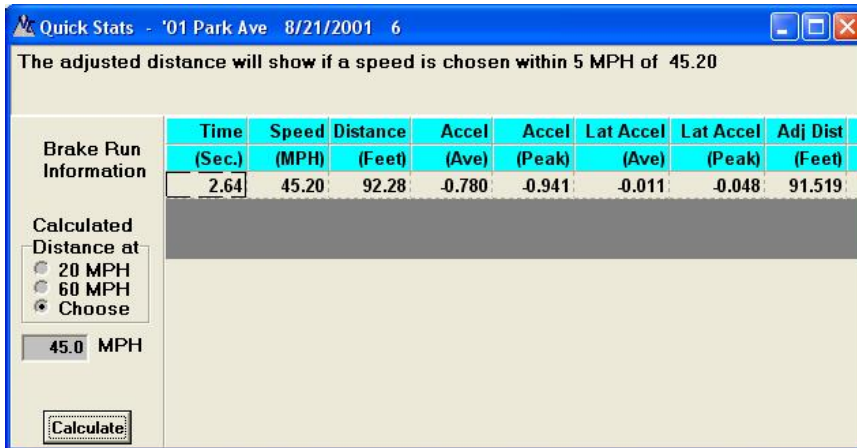


## 18. Quick Stats for braking runs

Quick stats is used for retrieving statistical data from the run similar to the displayed statistics from the VC3000.

Open a braking run then click the icon for Quick Stats  or choose **Tools|Quick Stats** from the menu. An adjusted distance can be calculated if the target speed is within 5 MPH of the actual speed. This is because it is impossible to calculate an accurate distance if the speed difference is greater than 5 MPH. If the test is close to 20 MPH click the 20 MPH button to calculate what the distance would have been if the vehicle would have been going exactly 20 MPH. Similarly for 60 MPH. Any other speed within 5 MPH of the actual speed can be used by typing it into the box then hitting **Enter** or clicking the **Calculate** button.

**Reaction time** is the time from when the VC3000 was externally activated, from the brake lights or the reaction timer switch, to when the vehicle reached the G force threshold, normally 0.200 G.



The adjusted distance will show if a speed is chosen within 5 MPH of 45.20

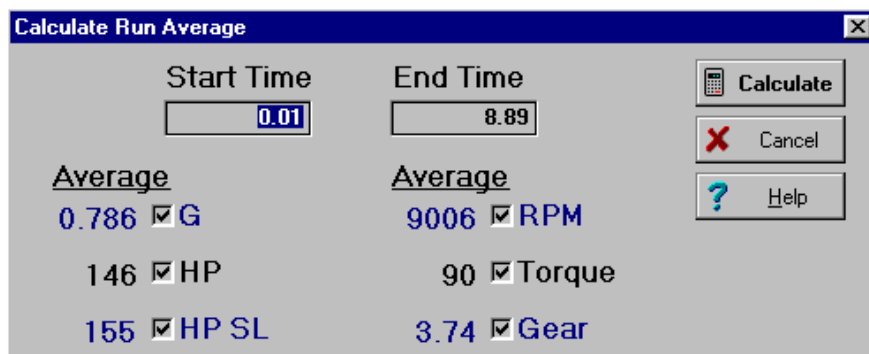
Brake Run Information	Time	Speed	Distance	Accel	Accel	Lat Accel	Lat Accel	Adj Dist
	(Sec.)	(MPH)	(Feet)	(Ave)	(Peak)	(Ave)	(Peak)	(Feet)
	2.64	45.20	92.28	-0.780	-0.941	-0.011	-0.048	91.519

Calculated Distance at  
 20 MPH  
 60 MPH  
 Choose  
 45.0 MPH  
 Calculate

## 19. Calculate Averages for a run

Using Calc Averages you can select any part of the run and get an average. To get the average G between any two points type in any time in the Start and End Time boxes. The End Time must be greater than the Start Time. The currently active run will be used for the calculations.

For brake runs the End Time will default to the run length but can be changed to include the last 0.20 sec. See page 25 for more details on the run length of brake runs.



Calculate Run Average

Start Time: 0.01      End Time: 8.89

Calculate  
 Cancel  
 Help

Average

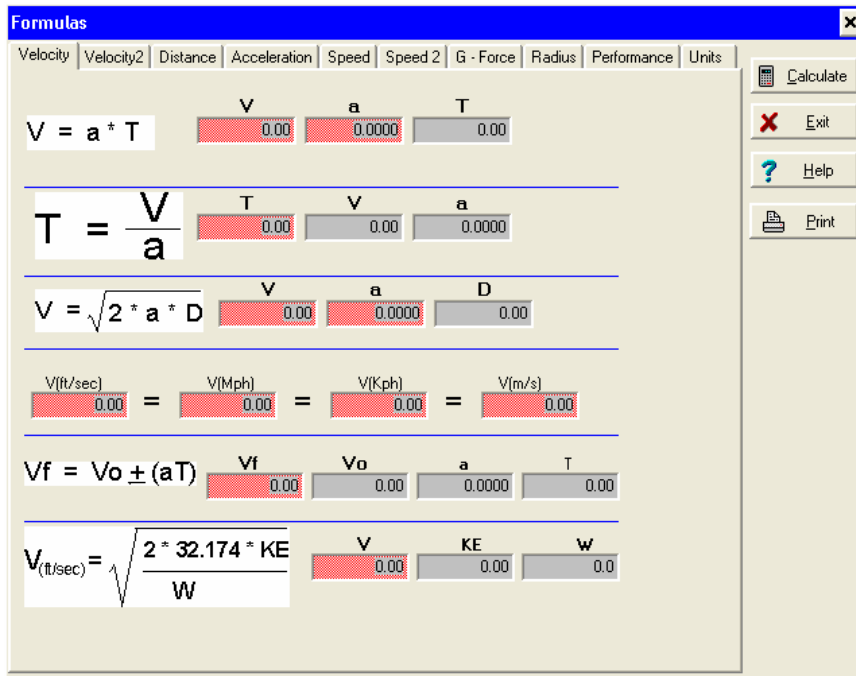
0.786 <input checked="" type="checkbox"/> G	9006 <input checked="" type="checkbox"/> RPM
146 <input checked="" type="checkbox"/> HP	90 <input checked="" type="checkbox"/> Torque
155 <input checked="" type="checkbox"/> HP SL	3.74 <input checked="" type="checkbox"/> Gear

## 20. Formulas Window

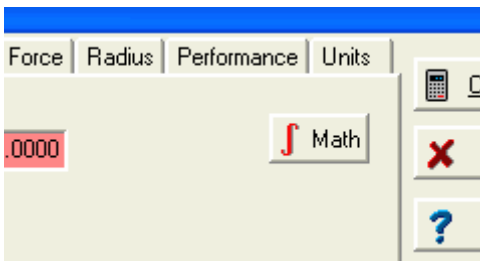
A variety of formulas are expressed in Profile. These formulas can be used by performance enthusiasts as well as accident reconstructionists. Select **Tools|Formulas** then type a number into the variable locations. Numbers in the red boxes change when any value is changed. The new result will be displayed. Some numbers are calculations only and cannot be modified.

Click the Print button to print the current tab sheet to a printer.

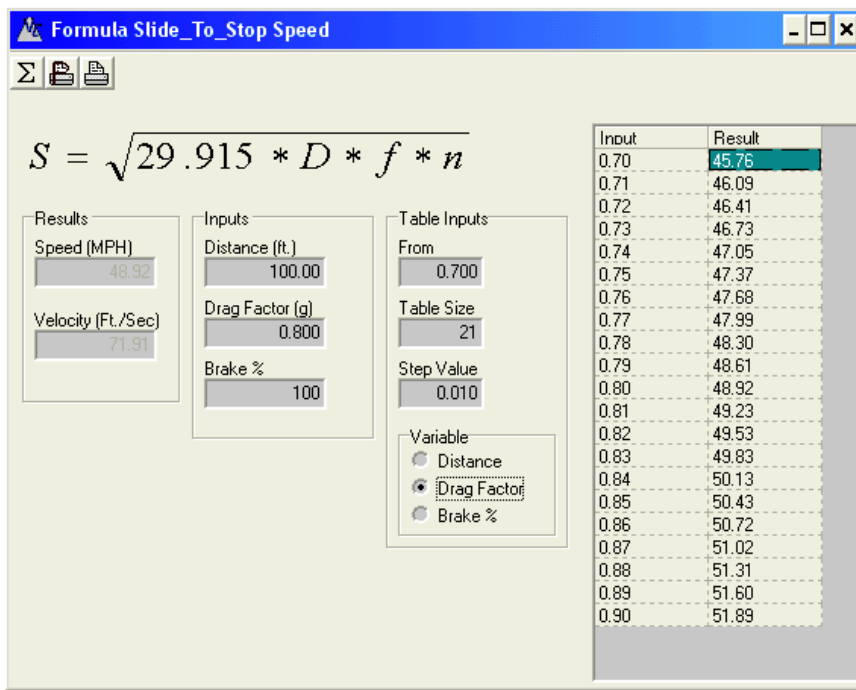
Click on the tabs at the top of the Formulas dialog box to view more formulas. The values will be updated when you hit enter, tab or click on the Calculate button.



There are several formulas that have a summation button by it. These formulas can be expanded in another window and one of the variables can have a range of values so the formula will calculate a table of values for the result.



Any formula that has the Math button can be expanded.



### Formula Window

The Results box is what is being solved for. In the example above, it is "S" in MPH and ft/sec.

The Inputs box is for the variables in the equation. In the example above they are Distance, Drag Factor and Brake percentage.

The Table Inputs box is for creating a table by varying one of the variables from the Inputs box. First select the input to vary from the Variable box, then type in the starting value in the From field, the number of rows or number of calculations in the Table Size field and the value to increment the chosen variable in the Step Value field. Now click on the summation icon (Σ) to create the table.

In the example above the Distance was set to 100 ft and the drag factor was varied starting at 0.700 G and increased every 0.010 G with 21 values in the table.

Click the summation icon (Σ) to make or update the table. Click the print preview button to see what will be printed. Click the print button to print to the selected printer.

## 21. Display Average of many Runs

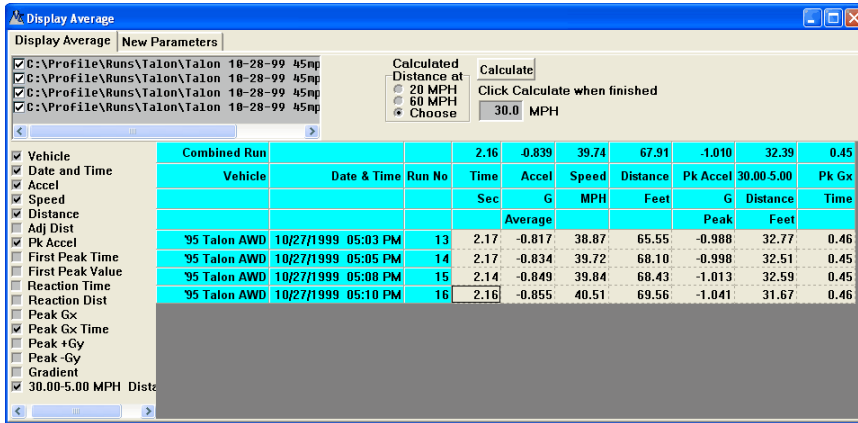
The Time, G-Force, Speed, Distance, HP, HP at sea level, RPM, Torque, Gear ratio, attached sensors and other run parameters can be displayed and averaged for many runs. Any or all of the information can be added or removed by clicking next to the information in the check box. On brake tests, only Time, G, Speed, Distance and active sensors are available. Files must be saved to disk to use in Display Average.

Use **Tools|Display Average**. When the Open dialog box opens, select one or more runs to open. If adding more runs, select **File|Open** or hit **F4** on the keyboard. Select a saved run from the list. To add a run to the list simply select another run.

To print the table of averages select **File|Print...**, click the print speed button, or press **Ctrl+P**.

To save the table of averages in ASCII form select **File|Save As Ascii...** A table saved as ASCII can be opened again by Profile into Display Average by selecting **File|Open...** Then choose the file type Ascii files (\*.csv). Choose a saved table from the list of ASCII files.

To save the table for use in a word processor or as text select **File|Save As Text...** Text files cannot be reopened by Profile.

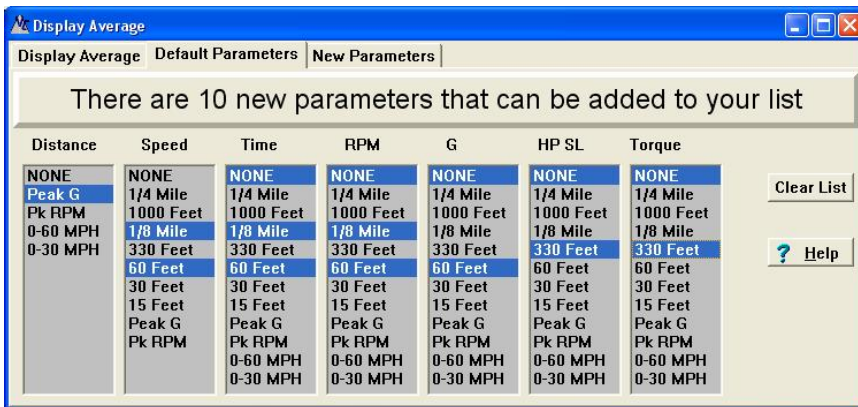


**Brake runs:**

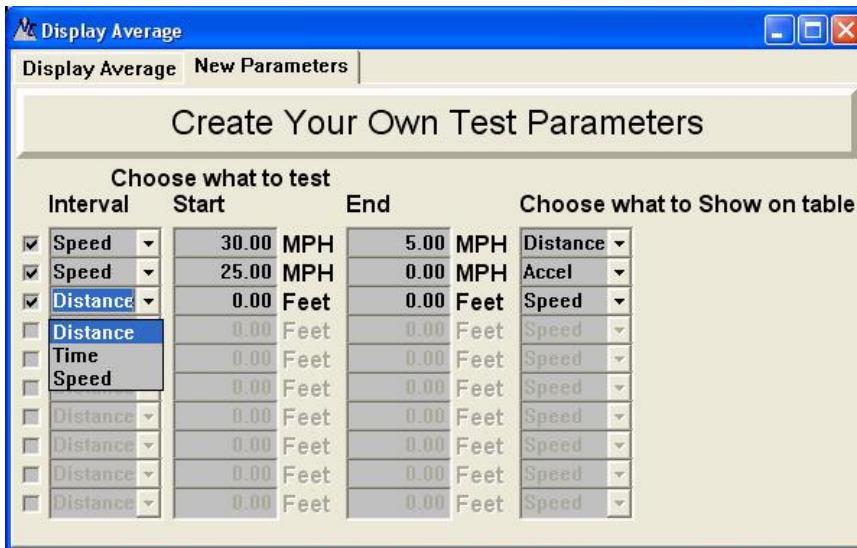
Up to 10 more columns of information can be added to brake runs. Click on the "New Parameters" tab to add more columns. Adjusted distance is the distance the vehicle would have traveled if it were traveling exactly the adjusted speed. For instance in the example above the adjusted distance is for a speed of 30.0 MPH. The actual speed must be within 5 MPH of the target speed or the adjusted distance will display 0.00 and will not be included in the overall average.

If the test is close to 20 MPH click the 20 MPH button to calculate what the distance would have been if the vehicle would have been going exactly 20 MPH. Similarly for 60 MPH. Any other speed within 5 MPH of the actual speed can be used by typing it into the box then hitting **Enter** or clicking the **Calculate** button.

As many as 20 more columns of information can be added to acceleration runs. The same information as quick stats is available for multiple runs using display average. Click the Default Parameters tab at the top of the window or use **View|Default Parameters**. Then use the mouse to select the additional information to display. To select more than one item in a list hold down the Shift or Ctrl key while selecting the item. Click Clear List to select NONE for all items.



Up to 10 more Parameters can be created for cases where Profile doesn't include the information you need. Click on the New Parameters tab at the top of the window or use **View|New Parameters**.



Custom ranges of speed, time or distance can be displayed by adding New Parameters to the Display Average window. Up to 10 new parameters can be added to acceleration or brake tables.

Click in a check box, then choose Distance, Time or Speed. Then choose a start and end value. Then choose the calculation you want to show on the table. Then click on the Display Average tab to display the new information.

On brake tests only G, Speed, Distance, Adjusted distance, Peak G and attached sensors are available. Adjusted distance is the distance the vehicle would have traveled if it were traveling exactly the adjusted speed. For instance in the example above the adjusted distance is for a speed of 30.0 MPH. The actual speed must be within 5 MPH of the target speed or the adjusted distance will display 0.00 and will not be included in the overall average.

If the test is close to 20 MPH click the 20 MPH button to calculate what the distance would have been if the vehicle would have been going exactly 20 MPH. Similarly for 60 MPH. Any other speed within 5 MPH of the actual speed can be used by typing it into the box then hitting **Enter** or clicking the **Calculate** button.

## 22. Graphing

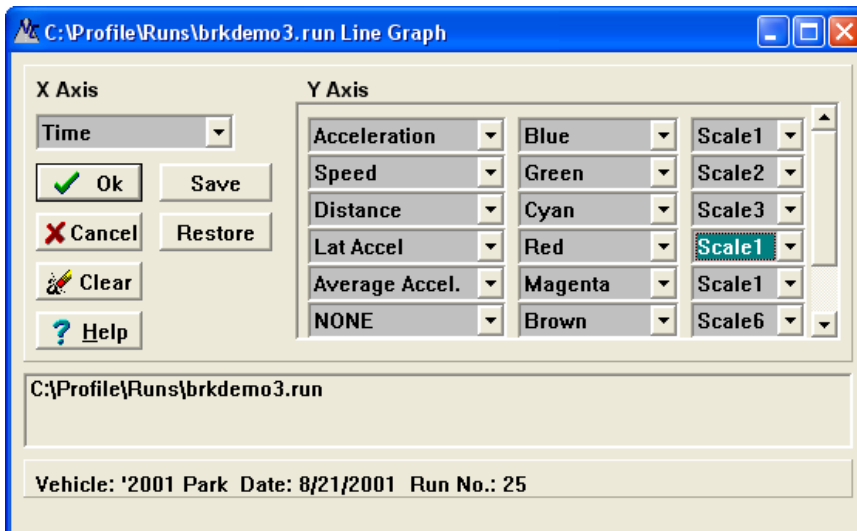
### Starting a Graph

Profile can graph one X axis and up to 8 Y axis. Up to 8 runs can be graphed simultaneously.

Click on **Graph|Line Graph** or press F2. The following dialog box appears. If the run file is empty or no run file is open, select **File|Open...** or hit F4 to open a file to graph. Select the X axis and the Y axes you would like to graph, any line color changes and Y axis scaling changes then click OK. Or click OK before selecting the axes and the X axis will be Time and the first available 8 Y axes will be graphed. Click Clear to set all Y Axes to none. Any available sensors will appear in order at the end of each drop down list.

### Scaling:

Up to 8 different scales can be graphed at one time. When two different sensors are on different scales the graph can look deceiving. Such is the case with Acceleration and Lateral Acceleration. If they are on different scales Lateral Acceleration can look much larger than actual. Set the Scale numbers the same for each sensor you want on the same scale. Profile automatically scales the axes for all sensors on the same scale. Other applications to make the scaling the same would be tri-axis accelerometers; EGT sensors; or pressure sensors.



### Buttons:

**Ok:** Click to graph the data listed on the selected Axes.

**Cancel:** Abort graphing.


**Clear:** Clear all Y Axes to "None".

**Help:** Jump to the Help for graph.

**Save:** Save the current Axes, colors and scales to disk for later recall.

**Restore:** Restore the Axes, colors and scales from the last time Save was used.

Once the graph appears the individual Y-axes can be turned off by clicking on the corresponding checkbox. Click it again to make the axis reappear.

Change the Y axis scaling by clicking on the line next to the axis name. To make the vertical reference line appear, click on the icon  or select **Graph/Data Cursor**. Move the vertical reference line by clicking on the data cursor and dragging it or by pressing the left and right arrow keys on your keyboard. Double click to move the cursor to where the mouse is. The numbers on the right side of the graph reflect the position of the line as you move it.

### Zoom in:

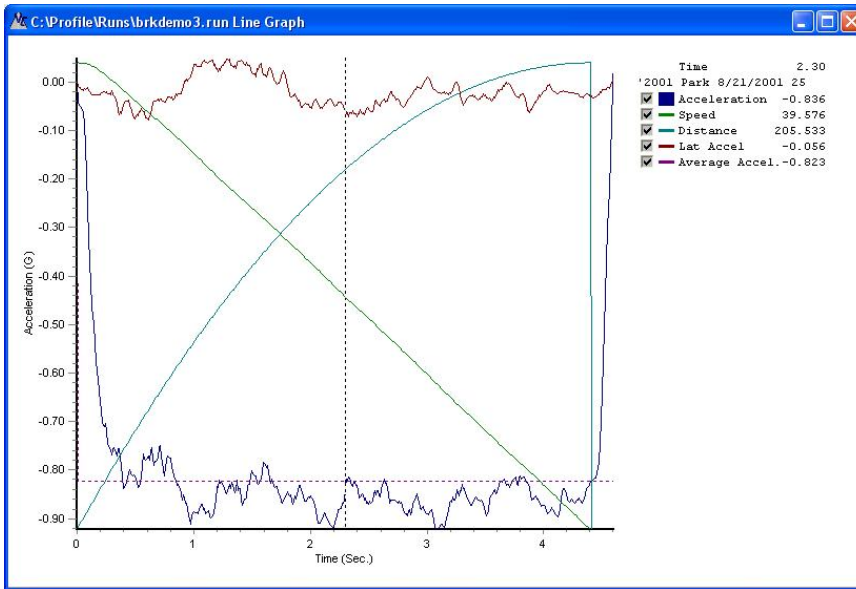
Left click and drag the mouse from upper left to lower right.

### Zoom out and re-center:

Click and drag from lower right to upper left.

### Scroll graph:

Right click and drag with the mouse.



To edit the graph, select the icon  or choose **Graph/Chart Editor...** Here you can change the line color, style, width, titles, scales, etc.

### Adding a run to a graph

Profile can graph up to 8 runs on one graph. The runs will have different color lines which can be changed by using the chart editor. Modifications to the vehicle setup can easily be viewed by comparing previous runs.

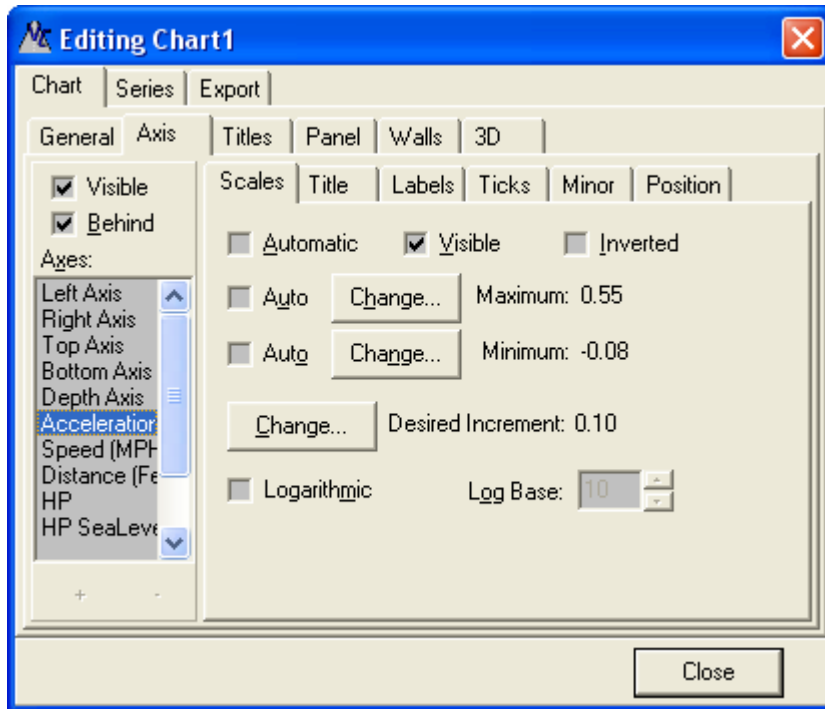
To add a run to a graph: If a graph is not already showing, open a run, then select **Graph|Line Graph** from the menu, choose the X and Y axis. Click OK. After the graph is drawn select **File|Open...** or press F4. Select another run and the same X and Y axes will be graphed. You can change the colors of the lines for the added run by selecting a different color from the drop down box. It works best to only have 3 or less Y axes at a time since the graph gets cluttered with more.

To create another graph while keeping the current graph, click on the Line Graph icon, open a run from disk, click the OK button. Profile automatically maximizes the size of the window so use the Restore Down icon in the upper left to see both graphs.

### Changing graph setup

Profile's Graphs and Meters can be modified to suit your needs. The Line colors and styles can be changed; the text including the labels and values can be changed; and the axis ranges can be changed.

Use the Chart Editor to change the appearance of the graph. Select **Graphs/Chart Editor....**

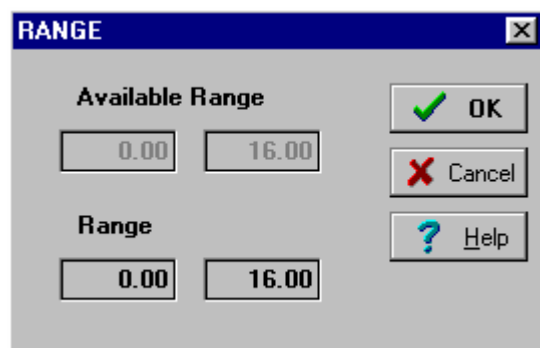


To change the axes Scales, Title etc. choose the Bottom Axis or one of the displayed Y axes such as acceleration, speed or distance. Left and Right Axis do not control any visible data.

### Changing the Graph Range

A graph can be zoomed in or out by changing the Range. Use **Graph|Range...** to select a beginning and ending time. It can be zoomed in on the X axis to 0.01 seconds. It defaults to the full length of the run. If more than one graph is displayed the available range is the length of the longest one.

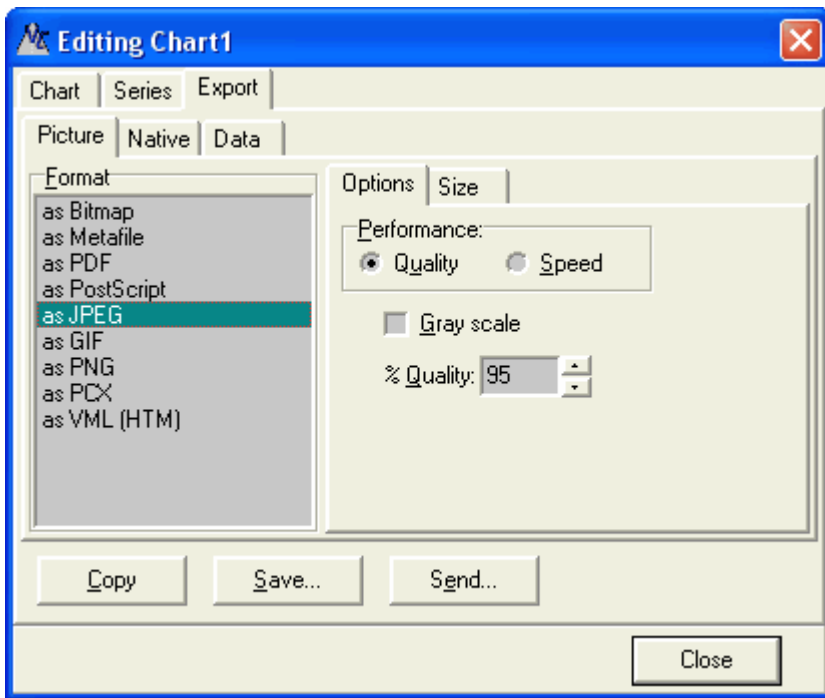
To zoom back out select Range again and click OK and Profile will graph the whole run.



### Exporting a graph

A graph can be saved to disk in several different popular graphics formats. Saving a graph can be done two different ways:

- From **File/Save as Metafile...**
- From the Chart Editor, Export, Picture.
  - Choose a picture format, set options if necessary, then click **Save...** or **Send....**



Using the Chart Editor, the data may also be exported to a variety of formats. See Exporting data on page 8.

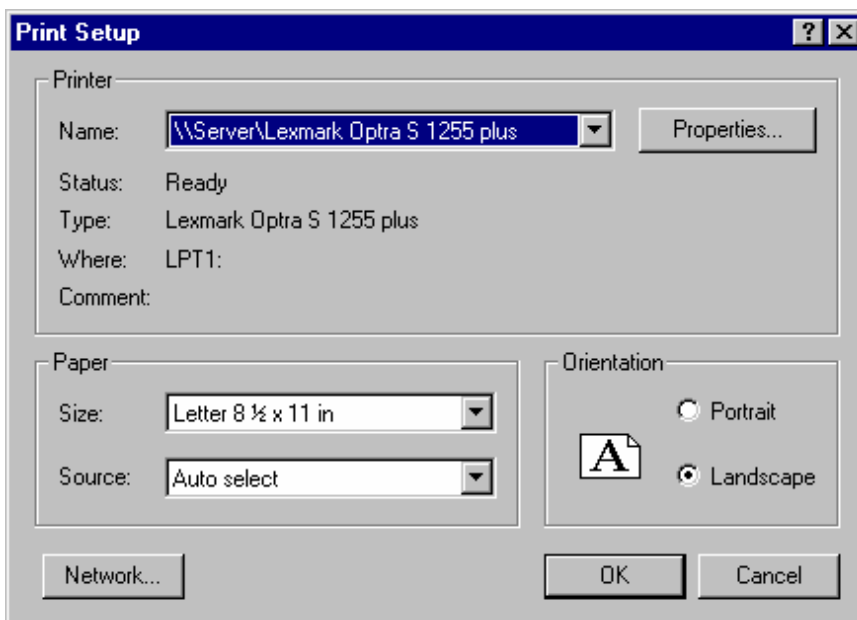
### Copying a graph to the clipboard

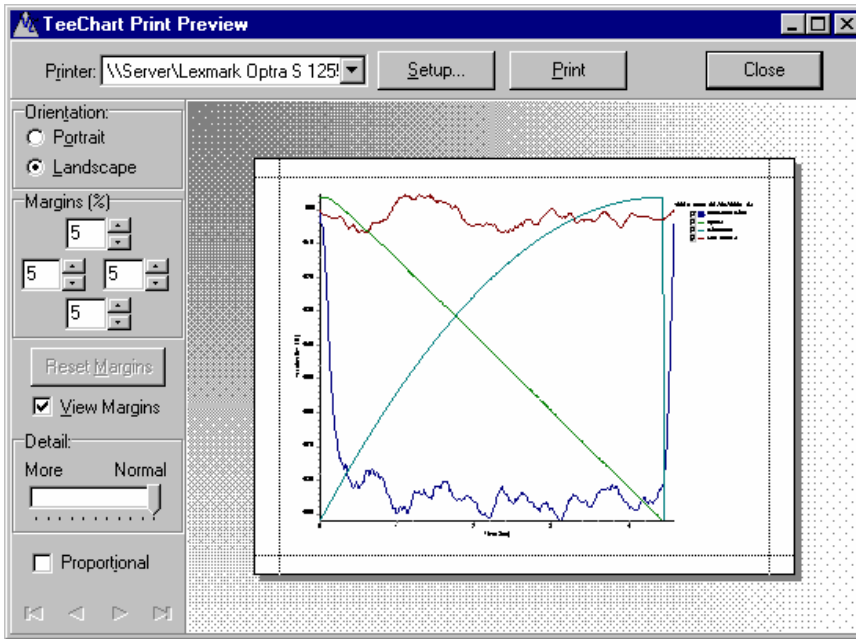
A displayed graph or Meters can be copied to the clipboard and used in other programs. This is useful for pasting a graph into a presentation. Select **Edit|Copy Graph to Clipboard** or click **Ctrl+C**. Then select **Edit|Paste** in another application to paste the graph.

### Printing a graph

A displayed graph can be printed just as it appears on the screen. Select **File|Print** and Profile will open a Preview window. Or click on the **Print Preview** button in the Chart Editor. Click the **Print** button to print the graph.

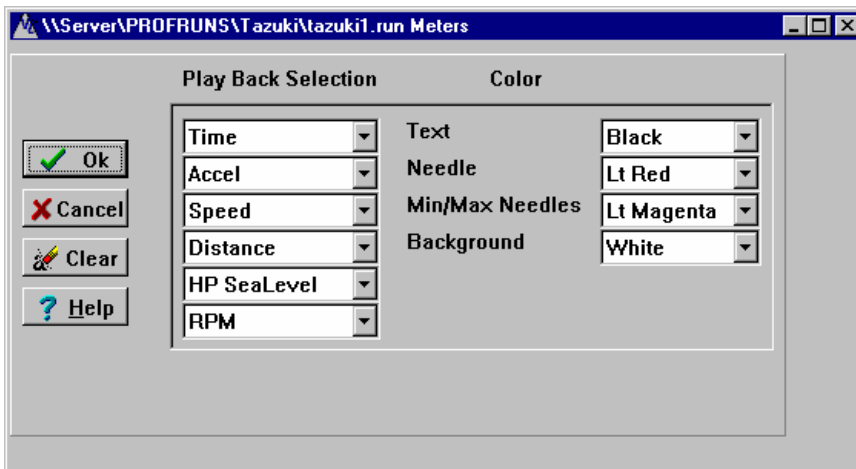
The Printer Setup can be changed by using **File|Printer Setup...** or by clicking on the **Setup...** button in the Preview screen.





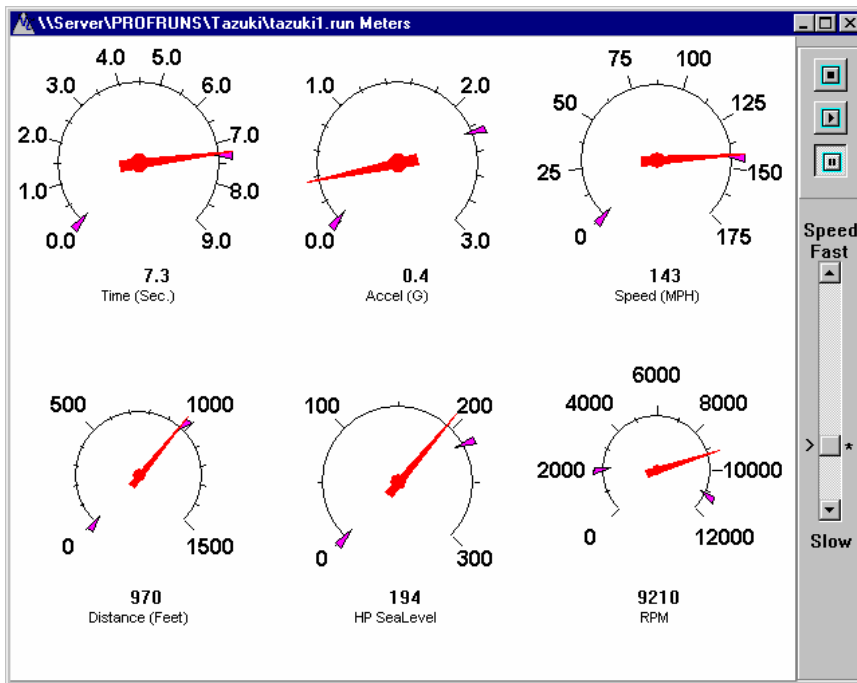
## 23. Real Time Playback with Meters

Profile can replay a run using analog looking meters. Add up to 6 meters and replay in real time or slow it down or speed it up. Click **Graph|Meters** to open a dialog box to choose which meters to display. Select from the drop down boxes or just click OK to choose the default meters. Click Clear to set Play Back Selections to none. Any available sensors will appear in order at the end of each list.



The playback speed defaults to real time. Adjust the slider to speed it up or slow it down. The marks next to the slider indicate the real time position. On slower computers it may not play back in real time. The more meters that are showing the more the screen must be refreshed therefore slowing the display playback.

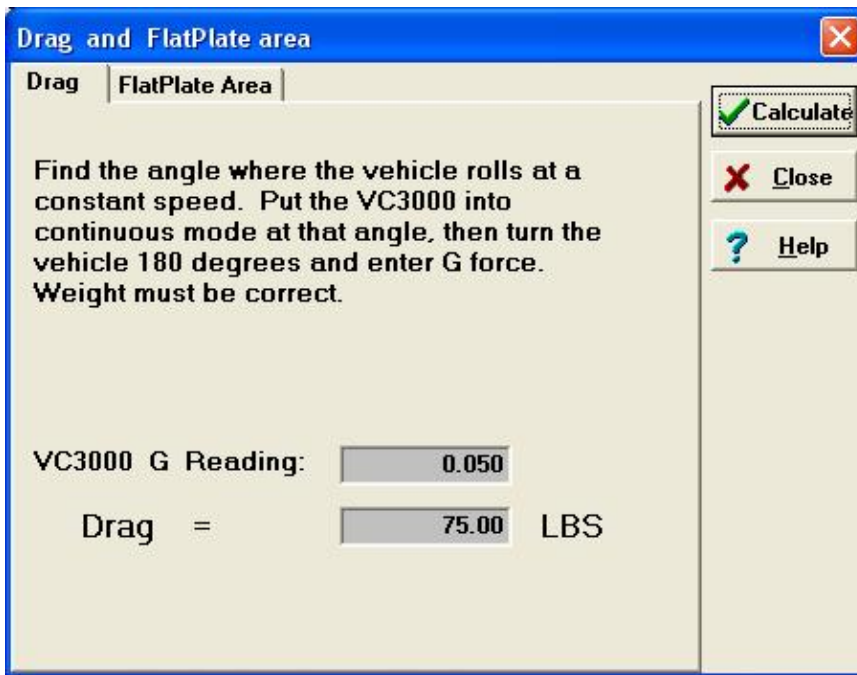
The meters will retain the low and high point of any meter with a marker.



## 24. Calculate Rolling Friction

Frictional Drag due to tires, drive train and brakes, also known as rolling friction, can be calculated using Profile. Place the vehicle on an incline where the vehicle just starts to roll and rolls at a slow constant speed. If the vehicle increases in speed, the incline is too great. Measure this angle using the VC3000 as described in the VC3000 manual, method 2 of measuring Gradient and Super elevation. Type the number into Profile without dividing the number by two. Profile will divide the number by two. The correct vehicle weight must be typed into the current header for the Drag to be accurate. The calculated Drag will be put into the current runs header. Profile uses Drag, FlatPlate Area, Wind, Altitude, and Temperature to correct for Horsepower and Torque losses due to wind resistance.

This drag is only a portion of the frictional drag on a vehicle under acceleration because under acceleration the friction between the gears and joints increase. The drag calculation also does not include transmission losses. To get engine Horsepower a number must be typed in to the % HP Loss header variable.



## 25. Calculate Flatplate Area

Flatplate area is the aerodynamic drag area of an object and can be calculated by Profile. In the case of a vehicle it includes the frontal area with the curvature of the body parts plus the drag under the car. Flatplate area is NOT the same as frontal area. Frontal area does not take into account the angle of the windshield, hood, curves of the fenders, etc., nor does it take into account the area under the car affected by wind. Flatplate area includes all sources of aerodynamic drag. If a car has a frontal area of 20 square feet, then the flatplate area would probably be about 15 square feet.

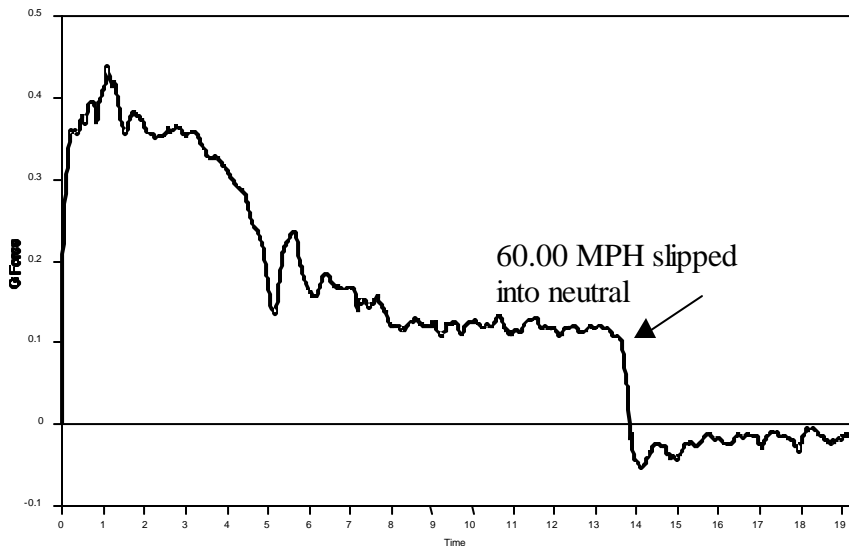
Flatplate area is used by profile to compensate for Horsepower and Torque losses due to wind resistance. You may notice that at higher speeds, say over 70 mph, that HP seems to decrease even though the RPM is climbing. This is due to the fact that it takes some HP to overcome wind resistance. Eventually wind resistance is so great that it takes all the HP available just to maintain a constant speed. The VC3000 would calculate 0 HP since there is 0 G at a constant speed. Since the VC3000 calculates HP and Torque from G-force wind resistance losses are not measured.

Once you find the flatplate area of a vehicle the number does not need to be changed unless you make aerodynamic changes to the vehicle. After compensating with flatplate area you should have chassis HP and Torque. To get engine HP and Torque you would need to type a value into the % HP Loss variable.

Vehicle Weight, Temperature, Wind speed, Drag and Altitude must be correct for Profile to accurately calculate FlatPlate Area.

To calculate Flatplate area of a vehicle:

1. Perform a programmed acceleration run to 60 seconds. Accelerate hard up to at least 60 MPH then put the vehicle into neutral and let it coast. Upload the run to Profile and look at the Time(X) vs. G(Y) curve. Notice the G forces go from positive to negative when the vehicle was slipped into neutral.



2. Take note where the vehicle was coasting and type the beginning time into the FlatPlate area calculation. Type in an ending time 0.5 to 1.0 second longer than the beginning time. In the example above the time would be from approximately 14.0 seconds to 15.0 seconds.
3. Profile will calculate the FlatPlate Area and place the number into the header for the current active run. Vehicle Weight, Temperature, Wind speed, Drag and Altitude must be correct for Profile to accurately calculate FlatPlate Area. Profile uses Weight, Drag, FlatPlate area, Wind, Altitude, Station Pressure and Temperature to correct for Horsepower and Torque losses due to wind resistance.

**Drag and FlatPlate area** ✖

**Drag** | **FlatPlate Area**

Calculate  
 Close  
 Help

Accelerate from a stop to about 60 MPH. Put vehicle in neutral and coast. Look at the graph to determine Start Time of coast with End Time 0.5 sec. longer. Drag, Weight, Altitude and Temp. must be correct.

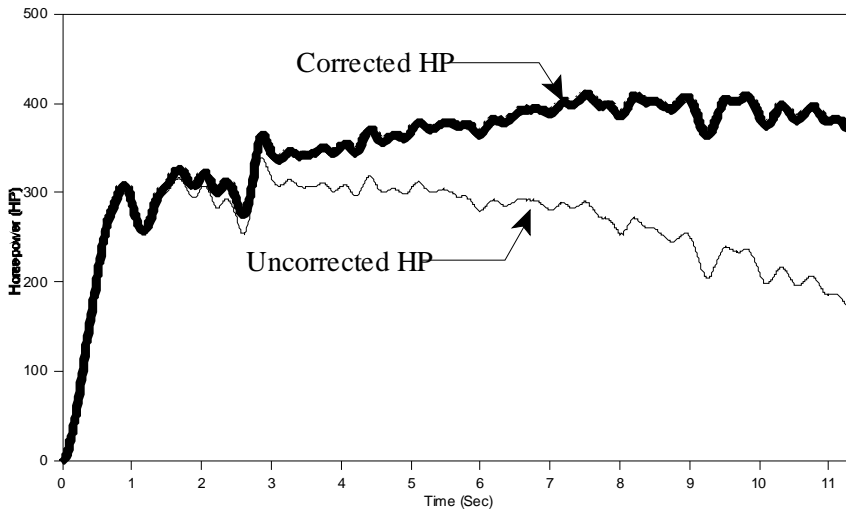
Enter Start Time:  Sec

Enter End Time:  Sec

FlatPlate Area =  Sq Ft

To see the difference flatplate area makes, save the run before and after the flatplate correction and graph the Horsepower of the two runs. Notice how the uncorrected HP starts to decrease as speed increases but the corrected one remains more constant or increases with increased speed.

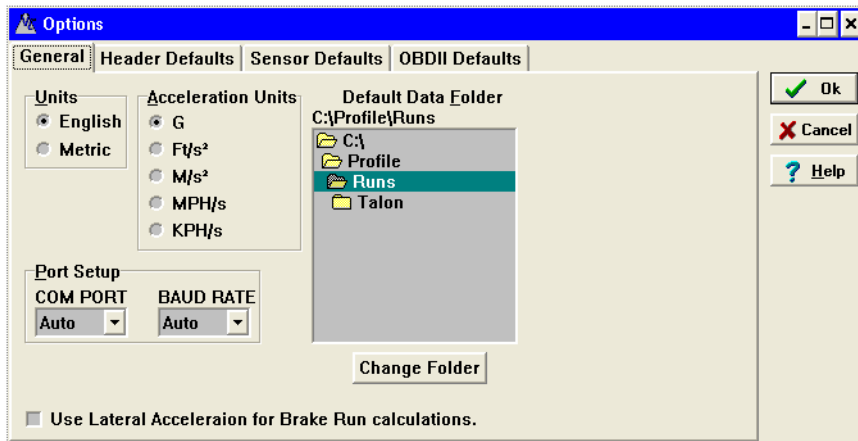
When graphing horsepower and corrected horsepower use the same scale for each or the lines will overlap. If you don't change the scales the curves will be the same but on different scales. Then click the radio button next to the Horsepower or the HP SeaLevel buttons to change the scaling of the curve.



## 26. Changing Program Options

Program options such as the units of measure, input port and baud rate can be changed by the user. Default information for each imported run can also be set in the options.

To modify any of these variables select **Tools|Options**.



### Units of Measure:

#### English:

Time	Seconds (Sec.)
Speed	Miles per Hour (MPH)
Distance	Feet (ft)
G-Force	G (G)
Horsepower	HP
Torque	Foot Pounds (ft lbs)
RPM	Revolutions per minute (RPM)
Gear Ratio	Revolution per foot (Rev/ft)

#### Metric:

Time	Seconds (Sec.)
Speed	Kilometers per Hour (KPH)
Distance	Meters (m)
G-Force	G (G)

Horsepower	HP
Torque	Newton Meters (NM)
RPM	Revolutions per minute (RPM)
Gear Ratio	Revolution per meter (Rev/m)

**Acceleration Units:**

Acceleration can be measured in any velocity divided by time. Profile gives the 5 most common acceleration units to choose from. G force units come from the earths gravitational pull at the surface as a reference point. 1 G is the force exerted on any object at the surface of the earth. The acceleration units will change in all forms of Profile when different acceleration units are chosen. Choosing Metric has no effect on the acceleration units. Changing acceleration units has no affect on calculations such as speed or distance.

**COM port:**

When the VC3000DAQ is plugged into the computers USB port and turned on for the first time, Windows will install the drivers from the CD and create a new COM port. The data that the VC3000 sends to the computer is compressed so only Profile can be used to import the data. The USB cable must be plugged in to both the computer and the VC3000DAQ, and the VC3000DAQ must be on before opening Options in order for the USB COM port to be visible.

Select Auto for the COM port to let Profile automatically search for the VC3000. When it finds the VC3000 it will store the COM port number to disk and scan that port first next time so scanning time will be very short as long as the COM port number doesn't change. If you choose a specific COM port Profile will only try communications on that one port.

When using the RS232 port for communication, any COM port compatible with windows will work with Profile. The port must not have a mouse, modem, joystick, or any other software running that controls the port in any way.

**Baud Rate:**

The baud rate is the speed that the VC3000 and the computer communicate. Select USB if the USB port is used. If RS232 is used, set the baud rate to 19200. The VC3000 automatically selects USB baud rate if the USB cable is plugged in.

Select Auto for the Baud Rate to let Profile scan for the correct baud rate. When it finds the correct baud rate Profile will store it to disk and use that baud rate first when attempting to communicate with the VC3000 next time. If you choose a specific Baud Rate Profile will only try to communicate at that baud rate.

**Default Data Folder:**

This is the default folder (directory) to open .RUN files from and save to when the program starts.

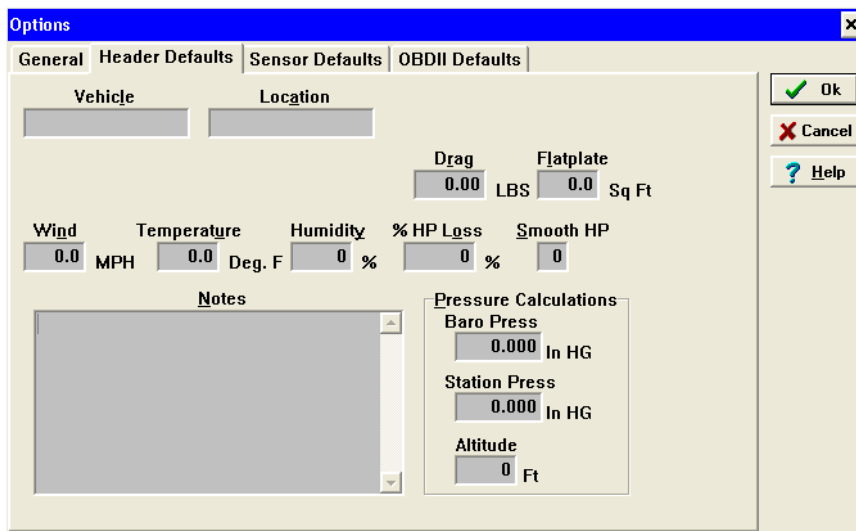
**Lateral G calculations:**

Check this box to calculate the summation of the vectors of G and lateral G. The G data will contain the new vectored values and speed and distance calculations will be made from it. This check box has no effect on acceleration runs or if no lateral G sensor was used. Using Yaw data to calculate speed, distance or average G is only useful if the vehicles direction of travel is constant. If the vehicle shows an arcing curve there will be extra lateral G due to turning, therefore speed, distance and average G will be too high when using the lateral G for calculations. The calculation is:  $\sqrt{G^2 + Lat. G^2} = Vectored G$

This check box must be checked before using Display Average, Make Average or Quick Stats for Vectored G to be accurate.

**Header Defaults:**

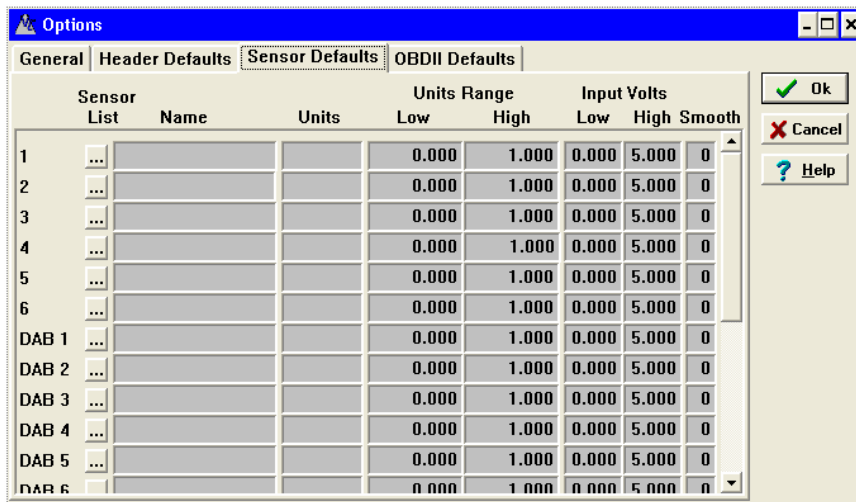
The Header Defaults page of options is only to set the default header information for imported runs. These settings will be transferred to any new run. The data typed in here will be used for the header information on all subsequent imports. This saves the time it would take to type in the redundant information for every run.



Click on the Sensors tab to set the default sensor names, units, and range.

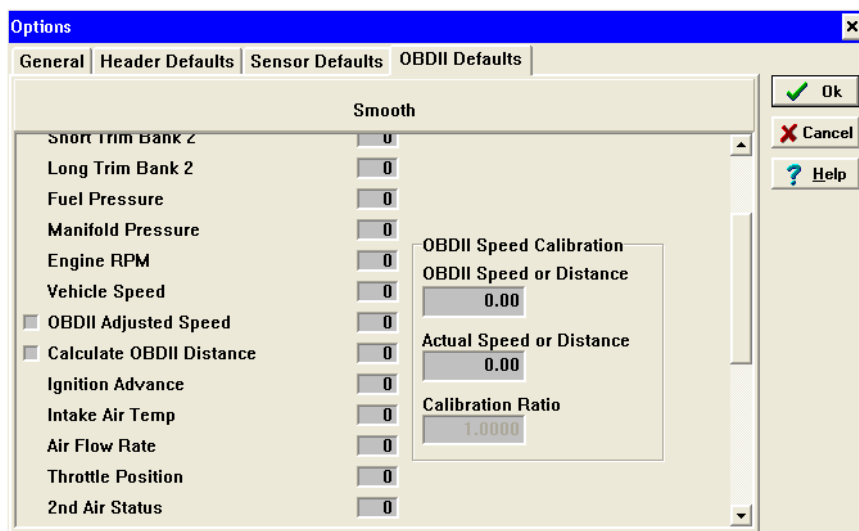
### Sensor defaults:

The sensor defaults page of options is only to set the default names, units, range and smooth factor for imported runs. These will be transferred to any new run. Changing these will not affect an open run. See Sensor Setup on page 21 for a complete description of setting the range.



### OBDII Defaults:

The OBDII Defaults page of options is only to set the default OBDII speed calibration ratio and smoothing for imported runs. These settings will be transferred to any new run. The data typed in here will be used for the OBDII information on all subsequent imports. This saves the time it would take to type in the redundant information for every run.



## OBDDII Speed calibration methods:

The speed reported by the vehicles OBDDII computer can be calibrated for use in Profile. This does not change the cars computer or your speedometer in any way. It only multiplies the speed reported by the vehicle by a ratio and stores it in Profile. Profile only uses this ratio in the "OBDDII Adjusted Speed" data. The "OBDDII Vehicle Speed" remains unchanged.

There are 3 methods to calibrate the OBDDII speed. Before starting any of these methods, be sure to plug in the VSI **AFTER** the car is running, and turn on the OBDDII speed, with high scan rate, and no other sensors in the VC3000.

**Method 1** uses the speed from the VC3000.

1. Do a programmed speed test from 0 to 60 mph.
2. Acceleration hard all the way through the test.
3. Import the run to Profile.
4. Click the "To new run window" button on the import window.
5. Click the OBDDII tab and click in the OBDDII adjusted speed checkbox to turn the calculation on.
6. Be sure the ratio is set to 1.00.
7. Click the Data tab and scroll down the VC3000 speed column until you see the closest value to 50.00 mph.
8. Look at and remember the value in the OBDDII adjusted speed column in the same row.
9. Click on the OBDDII tab and type in the VC3000 speed (50.00 or so) in the Actual Speed or Distance box.
10. Now type in the value of the adjusted speed in the OBDDII Speed or Distance box.
11. Profile will calculate the correct ratio and use it in the OBDDII adjusted speed calculation and OBDDII distance calculations.

Sometimes the OBDDII speed may have a flat spot where it took a long time to update the OBDDII information. If this happens at your target speed of 50 mph, then use the same process but use another speed such as 40 mph.

**Method 2** uses the speed from a radar gun or GPS system. Use a radar that is mounted inside the vehicle.

1. Do a timed acceleration test for 20 seconds.
2. Once 50 mph is indicated on the radar or GPS, try to hold that speed for 5 seconds or so.
3. When you feel you are the closest to exactly 50.0 mph, push a button on the VC3000 to stop recording.
4. Import the run to Profile.
5. Click the "To new run window" button on the import window.
6. Click the OBDDII tab and click in the OBDDII adjusted speed checkbox to turn the calculation on.
7. Be sure the ratio is set to 1.00.

8. Click the Data tab and scroll down to the bottom of the data.
9. This should be where the radar or GPS indicated 50.0 mph.
10. Look at and remember the value in the OBDII adjusted speed column in the last row.
11. Click on the OBDII tab and type in the radar or GPS speed (50.00 or so) in the Actual Speed or Distance box.
12. Now type in the value of the adjusted speed in the OBDII Speed or Distance box.
13. Profile will calculate the correct ratio and use it in the OBDII adjusted speed calculation and OBDII distance calculations.

Using a radar unit may not be very accurate because most police radars truncate to the whole number. Therefore the radar could indicate 50 when really you were going 50.9 mph. Some sports radar units will display speed to the tenth of a MPH.

Lower priced, below \$5000.00, GPS has a relatively slow update rate, 1Hz at best, therefore it may be difficult to pinpoint exactly 50.0 mph.

**Method 3** is the most accurate way to calibrate the OBDII adjusted speed. It uses milepost markers to measure distance. Mile post markers are laid out by professional surveyors and are extremely accurate. This same method could use a GPS device to measure distance but the distance will not be as accurate.

1. Find an at least 5 mile straight road with mile post markers.
2. Stop with a mile post marker lined up with the pillar post (support post between windshield and door) of your car.
3. Turn on the VC3000 and use the continuous OBD mode. Save the test in memory when prompted.
4. Accelerate up to the speed limit and hold it there until you see the 5th mile post marker from where you started.
5. Reduce your speed to about 30 mph and push a button on the VC3000 to stop recording when the 5th mile post marker lines up with your pillar post.
6. Import the run to Profile.
7. Click the "To new run window" button on the import window.
8. Click the OBDII tab and click in the Calculate OBDII distance checkbox to turn the calculation on.
9. Be sure the ratio is set to 1.00.
10. Click the Data tab and scroll down to the bottom of the data.
11. This should be where the 5th mile marker was.
12. Look at and remember the value in the OBDII distance column in the last row.
13. Click on the OBDII tab and type in the actual distance (26400 feet for 5 miles) in the Actual Speed or Distance box.
14. Now type in the value of the OBDII distance in the OBDII Speed or Distance box.
15. Profile will calculate the correct ratio and use it in the OBDII adjusted speed calculation and OBDII distance calculations.

This method can use any distance as long as the test is not too long for the VC3000's memory, 14 minutes with the OBDII speed on.

## 27. Troubleshooting

Also, see Profile Help for more details and solutions that may not listed here.

### Importing Problems:

#### Problem A:

Profile will not take data in.

#### Solution A:

1. Windows XP used USB drivers from another device. Uninstall USB drivers and follow the instructions in "USB Serial Port Installation" in Profile Help or on page 2.
2. The VC3000 is not turned on or is unplugged.

3. Wrong COM Port selected. Go to **Tools|Options...** and select Auto or the correct COM port, usually the last one in the list if using USB.
4. Profile's baud rate is wrong. Go to **Tools|Options...** and select Auto or the correct baud ("USB" for USB or "19200" for RS232)
5. The port number for the virtual serial port has changed. Go to **Tools|Options...** and select the correct port for the USB serial port, usually the last one in the list and set the baud rate to "USB".
6. The USB port drivers are not loaded yet. Wait about 5 seconds after plugging the VC3000 in and turning it on before attempting to import.
7. Be sure only 1 cable is connected to the VC3000, either USB or RS232. Also, unplug the VSI from the RS232 port.
8. PDA synchronization software such as "Hot Sync" is running and controlling the serial port. Close the PDA software and try again.
9. Wrong cable or not connected properly.
10. Open Control Panel/Device Manager and check COM ports. "USB serial port (COMx) should be listed. If it is not, check other devices and reinstall drivers if USB serial port has a question mark.
11. USB serial converter drivers not installed correctly. The latest drivers are available in the "downloads" section of our web site. Follow the procedure "Uninstall of USB Drivers" on page 4. Then plug the VC3000 USB port in again and follow the installation procedure on page 2.
12. Old version of Profile and new version of VC3000 firmware. Update Profile.

---

**Problem B:**

Error message: "COMx could not be opened" or "Output buffer too small for block"

**Solution B:**

1. The VC3000 is not turned on or is unplugged.
2. The USB port drivers are not loaded yet. Wait about 5 seconds after plugging the VC3000 in and turning it on before attempting to import.
3. Wrong COM Port selected. Go to **Tools|Options...** and select Auto or the correct COM port, usually the last one in the list if using USB.
4. Be sure only 1 cable is connected to the VC3000, either USB or RS232. Also, unplug the VSI from the RS232 port.
5. PDA synchronization software such as "Hot Sync" is running and controlling the serial port. Close the PDA software and try again.
6. Open Control Panel/Device Manager and check COM ports. "USB serial port (COMx)" should be listed. If it is not, check other devices and reinstall drivers if USB serial port has a question mark.

---

**Problem C:**

Error message "Wrong response reading file count"

**Solution C:**

1. Wrong COM port selected. Go to **Tools|Options...** and select Auto or the correct COM port.
2. Wrong baud rate selected. Go to **Tools|Options...** and select Auto or the correct baud rate.
3. Be sure only 1 cable is connected to the VC3000, either USB or RS232.

---

**Problem D:**

Error message "ie\_Hardware - hardware not present".

**Solution D:**

1. The Com Port is locked or in use by another device. Disable the other device or try another Com Port.
  2. The Com Port doesn't exist in the computer. Select a different Com Port.
  3. The driver software for the port is not present. Reinstall the port software.
  4. The resources (address space and interrupt) in BIOS must match that of windows. To check BIOS settings enter SETUP when the computer first boots up.
-

**Problem E:**

Error message "ie\_Open - device already open"

**Solution E:**

1. The COM port is locked or in use by another device. Disable the other device or try another COM port.
2. Profile or another program opened the port but didn't close it. Exit Profile and restart it. Or try closing any DOS applications. Or you may have to restart your computer.

---

**Problem F:**

Error message "Access violation" when importing or "File not found" when opening Options.

**Solution F:**

The registry has corrupt information for the Profile program. Open the registry editor (Start, Run..., type regedit and hit OK). Browse to HKEY\_CURRENT\_USER\Software\Vericom\Profile. Delete the whole key. Close the registry editor. NOTE: backup registry first. Vericom is not responsible if you mess up the registry! Run the Profile program again. It will create a new key with default values.

## Program Problems:

**Problem A:**

Program not showing some data.

**Solution A:**

The user type may be set to the wrong setting for your application. See VC3000 Setup page 9.

---

**Problem B:**

Floating point error message after importing data.

**Solution B:**

A setting in the VC3000 was invalid. Use "Set Defaults" in the Setup mode. Runs in memory will have to be deleted.